

LEA Name : Riverview SD
Address : 701 10th St
Oakmont, PA 15139

County : Allegheny
AUN Number : 103028203
LEA Type : SD

Annual Financial Report Accuracy Certification Statement

For Fiscal Year Ending

6/30/2022

Pennsylvania Department of Education

&

Office of Comptroller Operations

PDE-2056: Intermediate Unit

PDE-2057: School District, AVTS/CTC, Charter School,
and Special Program Jointure

CERTIFICATION: By signing this page I agree that the electronic data submitted is a complete and accurate statement of the financial operations and status of the local education agency for the fiscal year. It has been prepared in accordance with generally accepted accounting principles and established Commonwealth of PA reporting guidelines.



Chief School Administrator Signature

11/30/22

Date



Board Secretary Signature

11/30/22

Date

Joan Wehner

(412)828-1800 Ext :4020

Contact Person

Contact Person Telephone Number

jwehner@rsd.k12.pa.us

(412)828-9346

Contact Person E-mail Address

Contact Person Fax Number

Audit Certification

Annual Financial Report:

For Fiscal Year Ending 6/30/2022

(Pursuant to PA School Code Section 218(b))

LEA Name : Riverview SD
AUN Number : 103028203
County : Allegheny

Audit Certification Due:
12/31/2022

This certification is applicable to the Annual Financial Report data submitted through the Consolidated Financial Reporting System (CFRS).

CERTIFICATION: By signing this page I agree that the financial statements of the school have been properly audited as noted above pursuant to Article XXIV, and in the auditor's professional opinion, the Annual Financial Report (PDE-2057) submitted through CFRS is materially consistent with the audited financial statements.

Chief School Administrator

Signature

Date 11/30/22

Board Secretary

Signature Date 11/30/22

Joan Wehner

Contact Person

(412)828-1800

Contact Person Telephone Number

Ext :4020

jwehner@rsd.k12.pa.us

Contact Person E-mail Address

(412)828-9346

Contact Person Fax Number

RIVERVIEW SCHOOL DISTRICT

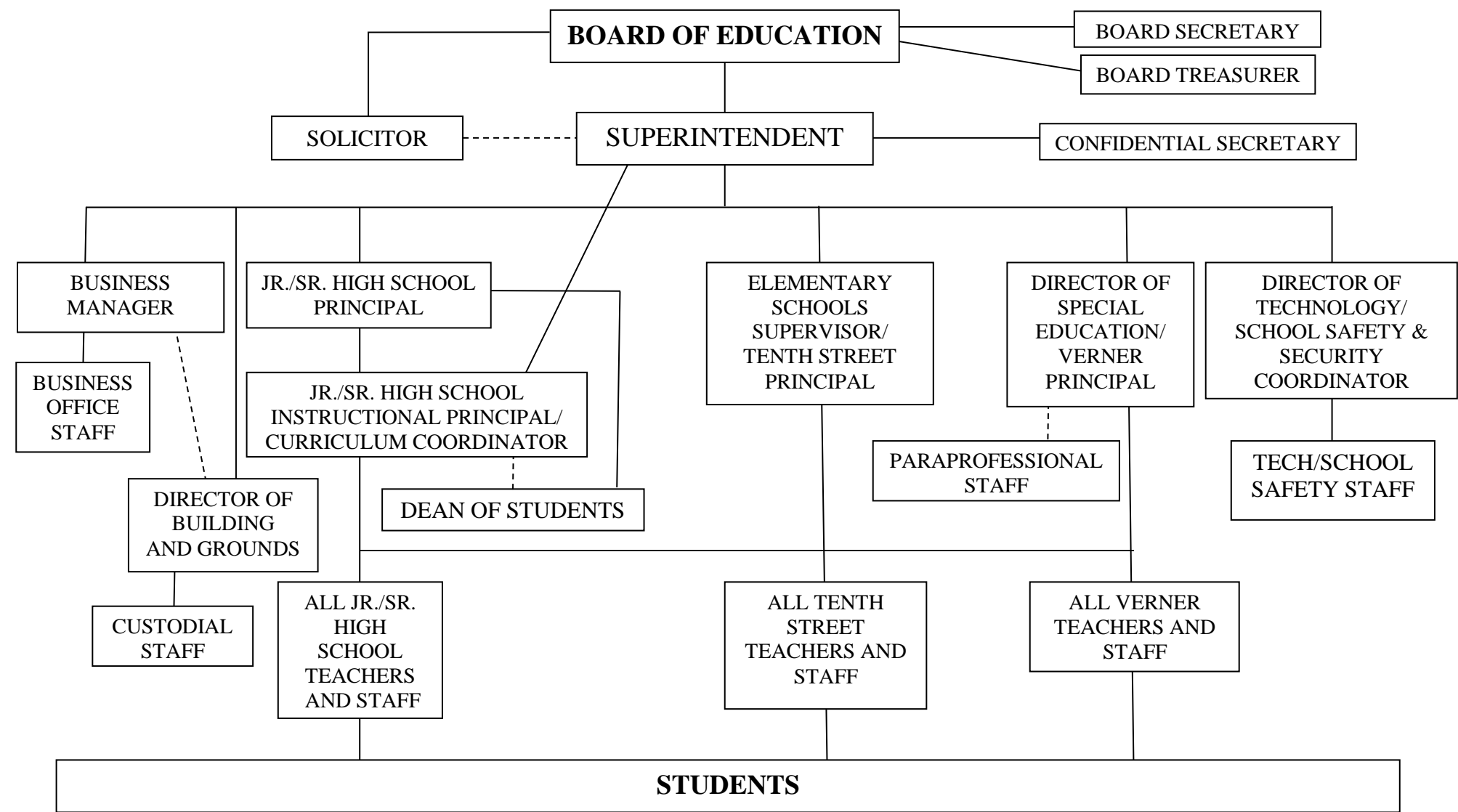
No. 008

SECTION: LOCAL BOARD PROCEDURES

TITLE: ORGANIZATION CHART

ADOPTED: June 18, 2012

REVISED: 6/17/19



RIVERVIEW SCHOOL DISTRICT

SECTION: FINANCES

TITLE: GASB STATEMENT 34

ADOPTED: June 18, 2012

REVISED:

	<p style="text-align: center;">622. GASB STATEMENT 34</p> <p>The Board recognizes the need to implement the required accounting and financial reporting standards stipulated by the Pennsylvania Department of Education.</p> <p>The primary objectives of implementing the GASB Statement 34 are to assure compliance with state requirements, and properly account for both the financial and economic resources of the district.</p> <p>Participation of the school district in any such activity shall be in accordance with Board policy.</p> <p>The responsibility to coordinate the compilation and preparation of all information necessary to implement this policy is delegated to the Business Manager.</p> <p>The designated individual shall be responsible for implementing the necessary procedures to establish and maintain a fixed asset inventory, including depreciation schedules. Depreciation shall be computed on a straight-line basis over the useful lives of the assets, using an averaging convention. Normal maintenance and repairs shall be charged to expense as incurred; major renewals and betterments that materially extend the life or increase the value of the asset shall be capitalized. A schedule of accumulated depreciation shall be consistent from year to year. The basis for depreciation, including groups of assets and useful lives, shall be in writing and submitted for review to the Board.</p> <p>The Business Manager shall prepare the required Management Discussion and Analysis (MD&A). The MD&A shall be in the form required by GASB Statement 34 and shall be submitted to the Board for approval, prior to publication.</p> <p>Prior to submission of the MD&A for Board approval, the district's independent auditors shall review the MD&A, in accordance with SAS No. 52, "Required Supplementary Information".</p>
1. Purpose	
2. Authority SC 218, 613	
3. Delegation of Responsibility	

References:

School Code – 24 P.S. Sec. 218, 613

Governmental Accounting Standards Board, Statement No. 34

<u>Val Number</u>	<u>Description</u>	<u>Justification</u>
30160	Federal IDEA revenue has been reported in revenue code 8512 or 8513 rather than in code 6832 as pass thru funds. Please make corrections or provide an explanation. Receipt of IDEA funded COVID 19 SECIM grants correctly recorded to 8512 can be noted in the justification. REV8512: \$2,576.00 REV8513: \$0.00	This account holds the COVID-19 SECIM Grant award correctly recorded to 8512.
42420	Expenditure Detail: Total current year 2700-513 expenditure varies from prior year by 10%. Correct the data or enter a justification. 2700-513, AFR Exp Detail: \$863,183.00 2700-513, PY AFR Amount: \$714,527.33	Increase in 2700-513 due to return of more in-person classes for special education and non-public schools. Decrease in prior year, amounts returning to historical amounts.
50410	SESS - 2140 Psychological Services: SESS Schedule amounts for Special Education vary from prior year by 40% or more. Correct the data or enter a justification. SESS Schedule 2140: \$7,494.00 Prior Year SESS Schedule 2140: \$0.00	In prior year, there were no expenditures in Function 2140, expenditure in current year due to services purchased.
50430	SESS - 2160 Social Work Services: SESS Schedule amounts for Special Education vary from prior year by 40% or more. Correct the data or enter a justification. SESS Schedule 2160: \$1,559.00 Prior Year SESS Schedule 2160: \$0.00	In prior year, there were no expenditures in Function 2160, expenditure in current year due to services purchased.
50460	SESS - 2420 Medical Services: SESS Schedule amounts for Special Education vary from prior year by 40% or more. Correct the data or enter a justification. SESS Schedule 2420: \$1,390.00 Prior Year SESS Schedule 2420: \$695.00	In prior year, the school doctor only provided a half year of services. Full year provided in 21/22.

Amounts Expressed in Whole Dollars		<u>General Fund</u> <u>(10)</u>	<u>Student Sponsored</u> <u>Activity Fund</u> <u>(21)</u>	<u>Public Purpose Trust</u> <u>(27)</u>	<u>Other Compt Approved</u> <u>(28)</u>	<u>Athletic / Activity</u> <u>(29)</u>
Assets And Deferred Outflows Of Resources						
Assets						
0100	Cash and Cash Equivalents	9,504,442				
0110	Investments					
0120	Taxes Receivable	1,782,518				
0130	Due From Other Funds	1,227				
0141	Due From Other Governments					
0142	State Revenue Receivable	790,443				
0143	Federal Revenue Receivable	162,513				
0145	Other Intergovernmental Revenue Receivable					
0146	Due from Primary Government					
0147	Due from Component Unit					
0150	Other Receivables					
0170	Inventories					
0180	Prepaid Expenses (Expenditures)	210,180				
0190	Other Current Assets	15,147				
Total Assets		\$12,466,470				
0910	Deferred Outflows of Resources					
Total Assets And Deferred Outflows Of Resources		\$12,466,470				

LEA : 103028203 Riverview SD

Printed 11/30/2022 3:14:09 PM

Amounts Expressed in Whole Dollars		<u>Capital Reserve (690.</u> <u>1850)</u> <u>(31)</u>	<u>Capital Reserve (1431)</u> <u>(32)</u>	<u>Other Capital Projects</u> <u>Fund</u> <u>(39)</u>	<u>Debt Service</u> <u>(40)</u>	<u>Permanent</u> <u>(90)</u>
Assets And Deferred Outflows Of Resources						
Assets						
0100	Cash and Cash Equivalents		3,960,829	2,528,526		
0110	Investments					
0120	Taxes Receivable					
0130	Due From Other Funds					
0141	Due From Other Governments					
0142	State Revenue Receivable					
0143	Federal Revenue Receivable					
0145	Other Intergovernmental Revenue Receivable					
0146	Due from Primary Government					
0147	Due from Component Unit					
0150	Other Receivables					
0170	Inventories					
0180	Prepaid Expenses (Expenditures)					
0190	Other Current Assets					
Total Assets			\$3,960,829	\$2,528,526		
0910	Deferred Outflows of Resources					
Total Assets And Deferred Outflows Of Resources			\$3,960,829	\$2,528,526		

Amounts Expressed in Whole Dollars		<u>Total Governmental</u> <u>Funds</u>
Assets And Deferred Outflows Of Resources		
Assets		
0100	Cash and Cash Equivalents	15,993,797
0110	Investments	
0120	Taxes Receivable	1,782,518
0130	Due From Other Funds	1,227
0141	Due From Other Governments	
0142	State Revenue Receivable	790,443
0143	Federal Revenue Receivable	162,513
0145	Other Intergovernmental Revenue Receivable	
0146	Due from Primary Government	
0147	Due from Component Unit	
0150	Other Receivables	
0170	Inventories	
0180	Prepaid Expenses (Expenditures)	210,180
0190	Other Current Assets	15,147
Total Assets		\$18,955,825
0910	Deferred Outflows of Resources	
Total Assets And Deferred Outflows Of Resources		\$18,955,825

Amounts Expressed in Whole Dollars	<u>General Fund</u> <u>(10)</u>	<u>Student Sponsored</u> <u>Activity Fund</u> <u>(21)</u>	<u>Public Purpose Trust</u> <u>(27)</u>	<u>Other Compt Approved</u> <u>(28)</u>	<u>Athletic / Activity</u> <u>(29)</u>
Liabilities And Deferred Inflows Of Resources And Fund Balances					
Liabilities					
0400 Due to Other Funds					
0411 Due to Other Governments					
0412 Due to Primary Government					
0413 Due to Component Unit					
0420 Accounts Payable	204,332				
0430 Contracts Payable					
0440 Current Portion of Long-Term Debt					
0450 Short-Term Payables					
0461 Accrued Salaries and Benefits	2,684,862				
0462 Payroll Deductions and Withholding	1,383				
0480 Unearned Revenues					
0490 Other Current Liabilities					
Total Liabilities	\$2,890,577				
0950 Deferred Inflows of Resources	1,432,102				
Fund Balances					
0810 Nonspendable Fund Balance	210,180				
0820 Restricted Fund Balance					
0830 Committed Fund Balance	4,864,415				
0840 Assigned Fund Balance	789,283				
0850 Unassigned Fund Balance	2,279,913				
Total Fund Balances	\$8,143,791				
Total Liabilities, Deferred Inflows Of Resources And Fund Balances	\$12,466,470				

LEA : 103028203 Riverview SD

Printed 11/30/2022 3:14:09 PM

Amounts Expressed in Whole Dollars		<u>Capital Reserve (690.</u> <u>1850)</u> <u>(31)</u>	<u>Capital Reserve (1431)</u> <u>(32)</u>	<u>Other Capital Projects</u> <u>Fund</u> <u>(39)</u>	<u>Debt Service</u> <u>(40)</u>	<u>Permanent</u> <u>(90)</u>
Liabilities And Deferred Inflows Of Resources And Fund Balances						
Liabilities						
0400	Due to Other Funds					
0411	Due to Other Governments					
0412	Due to Primary Government					
0413	Due to Component Unit					
0420	Accounts Payable					
0430	Contracts Payable			98,243		
0440	Current Portion of Long-Term Debt					
0450	Short-Term Payables					
0461	Accrued Salaries and Benefits					
0462	Payroll Deductions and Withholding					
0480	Unearned Revenues					
0490	Other Current Liabilities					
Total Liabilities				\$98,243		
0950	Deferred Inflows of Resources					
Fund Balances						
0810	Nonspendable Fund Balance					
0820	Restricted Fund Balance			2,430,283		
0830	Committed Fund Balance		3,960,829			
0840	Assigned Fund Balance					
0850	Unassigned Fund Balance					
Total Fund Balances			\$3,960,829	\$2,430,283		
Total Liabilities, Deferred Inflows Of Resources And Fund Balances			\$3,960,829	\$2,528,526		

LEA : 103028203 Riverview SD

Printed 11/30/2022 3:14:09 PM

Amounts Expressed in Whole Dollars		<u>Total Governmental</u> <u>Funds</u>
Liabilities And Deferred Inflows Of Resources And Fund Balances		
Liabilities		
0400 Due to Other Funds		
0411 Due to Other Governments		
0412 Due to Primary Government		
0413 Due to Component Unit		
0420 Accounts Payable	204,332	
0430 Contracts Payable	98,243	
0440 Current Portion of Long-Term Debt		
0450 Short-Term Payables		
0461 Accrued Salaries and Benefits	2,684,862	
0462 Payroll Deductions and Withholding	1,383	
0480 Unearned Revenues		
0490 Other Current Liabilities		
Total Liabilities	\$2,988,820	
0950 Deferred Inflows of Resources	1,432,102	
Fund Balances		
0810 Nonspendable Fund Balance	210,180	
0820 Restricted Fund Balance	2,430,283	
0830 Committed Fund Balance	8,825,244	
0840 Assigned Fund Balance	789,283	
0850 Unassigned Fund Balance	2,279,913	
Total Fund Balances	\$14,534,903	
Total Liabilities, Deferred Inflows Of Resources And Fund Balances	\$18,955,825	

Amounts Expressed in Whole Dollars	<u>General Fund</u> <u>(10)</u>	<u>Student Sponsored</u> <u>Activity Fund</u> <u>(21)</u>	<u>Public Purpose Trust</u> <u>(27)</u>	<u>Other Compt Approved</u> <u>(28)</u>	<u>Athletic / Activity</u> <u>(29)</u>
Revenues					
6000 Revenue from Local Sources	18,276,694				
7000 Revenue from State Sources	6,988,976				
8000 Revenue from Federal Sources	1,248,584				
Total Revenues	\$26,514,254				
Expenditures					
1000 Instruction	14,238,433				
2000 Support Services	7,976,721				
3000 Operation of Non-Instructional Services	735,450				
4000 Facilities Acquisition, Construction and Improvement Services	10,000				
5110 Debt Service	1,564,366				
5130 Refund of Prior Year Revenues / Receipts	128,980				
5140 Leases	42,179				
Total Expenditures	\$24,696,129				
Excess (Deficiency) Of Revenues Over Expenditures	\$1,818,125				
Other Financing Sources (Uses)					
9110 Face Value of Bonds Issued					
9120 Proceeds from Refunding of Bonds					
9130 Bond Premiums					
9200 Proceeds from Extended-Term Financing and Leases					
9300 Interfund Transfers - IN					
9400 Sale of or Compensation for Loss of Fixed Assets					
9710 Transfers from Component Units					
9720 Transfers from Primary Governments					
9910 Other Financing Sources Not Listed in the 9000 Series					
9990 Insurance Recoveries					
5120 Debt Service – Refunded Bonds					
5150 Bond Discounts					
5200 Interfund Transfers – Out	1,400,000				
5300 Transfers Out to Component Units/Primary Governments					
Total Other Financing Sources (Uses)	(\$1,400,000)				

Amounts Expressed in Whole Dollars		<u>Capital Reserve (690.</u> <u>1850)</u> <u>(31)</u>	<u>Capital Reserve (1431)</u> <u>(32)</u>	<u>Other Capital Projects</u> <u>Fund</u> <u>(39)</u>	<u>Debt Service</u> <u>(40)</u>	<u>Permanent</u> <u>(90)</u>
Revenues						
6000	Revenue from Local Sources		5,093	3,581		
7000	Revenue from State Sources					
8000	Revenue from Federal Sources					
Total Revenues			\$5,093	\$3,581		
Expenditures						
1000	Instruction					
2000	Support Services		744			
3000	Operation of Non-Instructional Services					
4000	Facilities Acquisition, Construction and Improvement Services		5,494	2,869,076		
5110	Debt Service					
5130	Refund of Prior Year Revenues / Receipts					
5140	Leases					
Total Expenditures			\$6,238	\$2,869,076		
Excess (Deficiency) Of Revenues Over Expenditures			(\$1,145)	(\$2,865,495)		
Other Financing Sources (Uses)						
9110	Face Value of Bonds Issued					
9120	Proceeds from Refunding of Bonds					
9130	Bond Premiums					
9200	Proceeds from Extended-Term Financing and Leases					
9300	Interfund Transfers - IN		1,400,000			
9400	Sale of or Compensation for Loss of Fixed Assets					
9710	Transfers from Component Units					
9720	Transfers from Primary Governments					
9910	Other Financing Sources Not Listed in the 9000 Series					
9990	Insurance Recoveries					
5120	Debt Service – Refunded Bonds					
5150	Bond Discounts					
5200	Interfund Transfers – Out					
5300	Transfers Out to Component Units/Primary Governments					
Total Other Financing Sources (Uses)			\$1,400,000			

Amounts Expressed in Whole Dollars		<u>Total Governmental Funds</u>
Revenues		
6000	Revenue from Local Sources	18,285,368
7000	Revenue from State Sources	6,988,976
8000	Revenue from Federal Sources	1,248,584
Total Revenues		\$26,522,928
Expenditures		
1000	Instruction	14,238,433
2000	Support Services	7,977,465
3000	Operation of Non-Instructional Services	735,450
4000	Facilities Acquisition, Construction and Improvement Services	2,884,570
5110	Debt Service	1,564,366
5130	Refund of Prior Year Revenues / Receipts	128,980
5140	Leases	42,179
Total Expenditures		\$27,571,443
Excess (Deficiency) Of Revenues Over Expenditures		(\$1,048,515)
Other Financing Sources (Uses)		
9110	Face Value of Bonds Issued	
9120	Proceeds from Refunding of Bonds	
9130	Bond Premiums	
9200	Proceeds from Extended-Term Financing and Leases	
9300	Interfund Transfers - IN	1,400,000
9400	Sale of or Compensation for Loss of Fixed Assets	
9710	Transfers from Component Units	
9720	Transfers from Primary Governments	
9910	Other Financing Sources Not Listed in the 9000 Series	
9990	Insurance Recoveries	
5120	Debt Service – Refunded Bonds	
5150	Bond Discounts	
5200	Interfund Transfers – Out	1,400,000
5300	Transfers Out to Component Units/Primary Governments	
Total Other Financing Sources (Uses)		\$0

Amounts Expressed in Whole Dollars		<u>General Fund</u> <u>(10)</u>	<u>Student Sponsored</u> <u>Activity Fund</u> <u>(21)</u>	<u>Public Purpose Trust</u> <u>(27)</u>	<u>Other Compt Approved</u> <u>(28)</u>	<u>Athletic / Activity</u> <u>(29)</u>
Special And Extraordinary Items						
9920	Special Items – Gains					
9930	Extraordinary Items – Gains					
5520	Special Items – Losses					
5530	Extraordinary Items – Losses					
Net Change In Fund Balances		\$418,125				
Fund Balance						
0001	Fund Balance - Beginning of Fiscal Year	7,725,666				
Fund Balance - End Of Year		\$8,143,791				

Amounts Expressed in Whole Dollars		<u>Capital Reserve (690.1850)</u> <u>(31)</u>	<u>Capital Reserve (1431)</u> <u>(32)</u>	<u>Other Capital Projects</u> <u>Fund</u> <u>(39)</u>	<u>Debt Service</u> <u>(40)</u>	<u>Permanent</u> <u>(90)</u>
Special And Extraordinary Items						
9920	Special Items – Gains					
9930	Extraordinary Items – Gains					
5520	Special Items – Losses					
5530	Extraordinary Items – Losses					
Net Change In Fund Balances			\$1,398,855	(\$2,865,495)		
Fund Balance						
0001	Fund Balance - Beginning of Fiscal Year		2,561,974	5,295,778		
Fund Balance - End Of Year			\$3,960,829	\$2,430,283		

Amounts Expressed in Whole Dollars		<u>Total Governmental</u> <u>Funds</u>
Special And Extraordinary Items		
9920	Special Items – Gains	
9930	Extraordinary Items – Gains	
5520	Special Items – Losses	
5530	Extraordinary Items – Losses	
Net Change In Fund Balances		(\$1,048,515)
Fund Balance		
0001	Fund Balance - Beginning of Fiscal Year	15,583,418
Fund Balance - End Of Year		\$14,534,903

Amounts Expressed in Whole Dollars		<u>Food Service</u> <u>(51)</u>	<u>Child Care</u> <u>Operations</u> <u>(52)</u>	<u>Other Enterprise</u> <u>(58)</u>	<u>TOTAL</u>	<u>Internal Service</u> <u>(60)</u>
Assets And Deferred Outflows Of Resources						
Current Assets						
0100	Cash and Cash Equivalents	178,662			178,662	
0110	Investments					
0130	Due From Other Funds					
0141	Due From Other Governments					
0142	State Revenue Receivable	2,935			2,935	
0143	Federal Revenue Receivable	88,038			88,038	
0146	Due from Primary Government					
0147	Due from Component Unit					
0150	Other Receivables	124			124	
0170	Inventories	11,241			11,241	
0180	Prepaid Expenses (Expenditures)					
0190	Other Current Assets					
Total Current Assets		\$281,000			\$281,000	
Noncurrent Assets						
0211	Land					
0212	Site Improvements (Net)					
0220	Buildings and Building Improvements (Net)					
0230	Machinery, Equipment and Furniture (Net)	21,309			21,309	
0250	Construction in Progress					
0260	Long Term Prepayments					
0290	Other Noncurrent Assets					
Total Noncurrent Assets		\$21,309			\$21,309	
0910	Deferred Outflows of Resources					
Total Assets And Deferred Outflows Of Resources		\$302,309			\$302,309	

Amounts Expressed in Whole Dollars	<u>Food Service</u> <u>(51)</u>	<u>Child Care</u> <u>Operations</u> <u>(52)</u>	<u>Other Enterprise</u> <u>(58)</u>	<u>TOTAL</u>	<u>Internal Service</u> <u>(60)</u>
Liabilities And Deferred Inflows Of Resources And Net Position					
Current Liabilities					
0400 Due to Other Funds	1,227			1,227	
0411 Due to Other Governments					
0413 Due to Component Unit					
0420 Accounts Payable	14,792			14,792	
0430 Contracts Payable					
0440 Current Portion of Long-Term Debt					
0450 Short-Term Payables					
0461 Accrued Salaries and Benefits					
0462 Payroll Deductions and Withholding					
0480 Unearned Revenues	11,156			11,156	
0490 Other Current Liabilities					
Total Current Liabilities	\$27,175			\$27,175	
Noncurrent Liabilities					
0510 Bonds Payable					
0520 Extended-Term Financing Agreements Payable					
0530 Lease Obligations					
0540 Accumulated Compensated Absences					
0550 Authority Lease Obligations					
0560 Other Post-Employment Benefits (OPEB)					
0570 Net Pension Liability					
0599 Other Noncurrent Liabilities					
Total Noncurrent Liabilities					
Total Liabilities	\$27,175			\$27,175	
0950 Deferred Inflows of Resources					
Net Position					
0791 Net Investment in Capital Assets	21,309			21,309	
0008 Restricted Net Position (0792 – 0798)					
0799 Unrestricted Net Position	253,825			253,825	
Total Net Position	\$275,134			\$275,134	
Total Liabilities And Deferred Inflows Of Resources And Net Position	\$302,309			\$302,309	

Amounts Expressed in Whole Dollars	<u>Food Service</u> <u>(51)</u>	<u>Child Care Operations</u> <u>(52)</u>	<u>Other Enterprise</u> <u>(58)</u>	<u>TOTAL</u>	<u>Internal Service</u> <u>(60)</u>
Operating Revenues					
6600 Food Service Revenue	85,326			85,326	
0071 Charges for Services					
0072 Other Operating Revenue					
Total Operating Revenues	\$85,326			\$85,326	
Operating Expenses					
100 Personnel Services – Salaries					
200 Personnel Services – Employee Benefits					
300 Purchased Professional and Technical Services					
400 Purchased Property Services					
500 Other Purchased Services	527,890			527,890	
600 Supplies	52,981			52,981	
740 Depreciation	8,450			8,450	
810 Dues and Fees	2,603			2,603	
880 Refunds of Prior Years' Receipts					
890 Miscellaneous Expenditures					
Total Operating Expenses	\$591,924			\$591,924	
Operating Income (Loss)	(\$506,598)			(\$506,598)	
Non Operating Revenues (Expenses)					
6500 Earnings on Investments					
6920 Contributions and Donations from Private Sources					
6930 Gains or Losses on Sale of Fixed Assets					
6991 Refunds of a Prior Year Expenditure					
7000 Revenue from State Sources	16,670			16,670	
8000 Revenue from Federal Sources	625,544			625,544	
9990 Insurance Recoveries					
820 Claims and Judgments Against the LEA					
830 Interest					
TOTAL Non Operating Revenues (Expenses)	\$642,214			\$642,214	
Income (Loss) Before Contributions And Transfers	\$135,616			\$135,616	

Amounts Expressed in Whole Dollars	<u>Food Service</u> <u>(51)</u>	<u>Child Care Operations</u> <u>(52)</u>	<u>Other Enterprise</u> <u>(58)</u>	<u>TOTAL</u>	<u>Internal Service</u> <u>(60)</u>
Contributions, Transfers, and Special and Extraordinary Items					
5200 Interfund Transfers – Out					
5300 Transfers Out to Component Units/Primary Governments					
5520 Special Items – Losses					
5530 Extraordinary Items – Losses					
9300 Interfund Transfers - IN					
9500 Capital Contributions					
9700 Transfers IN From Component Units/Primary Governments					
9920 Special Items – Gains					
9930 Extraordinary Items – Gains					
Change In Net Position	\$135,616			\$135,616	
0002 Net Position - Beginning of Fiscal Year	139,518			139,518	
0003 Accounting Changes / Residual Equity Transfers					
Net Position - End Of Year	\$275,134			\$275,134	

LEA : 103028203 Riverview SD

Printed 11/30/2022 3:14:31 PM

Amounts Expressed in Whole Dollars		<u>Food Service</u> <u>(51)</u>	<u>Child Care Operations</u> <u>(52)</u>	<u>Other Enterprise</u> <u>(58)</u>	<u>TOTAL</u>	<u>Internal Service(60)</u>
Cash Flows From Operating Activities						
0011	Cash Receipts From Users	91,578			91,578	
0012	Cash Receipts From Assessments Made to Other Funds					
0013	Cash Receipts From Earnings on Investments					
0014	Cash Receipts From Other Operating Revenue					
0015	Cash Payments To Employees For Services					
0016	Cash Payments For Insurance Claims					
0017	Cash Payments To Suppliers For Goods and Services	519,843			519,843	
0018	Cash Payments For Other Operating Expenses	2,603			2,603	
Net Cash Provided By (Used For) Operating Activities		(\$430,868)			(\$430,868)	
Cash Flows From Non-Capital Financing Activities						
0021	Receipts From Local Sources - 6000					
0022	Receipts From State Sources - 7000	14,512			14,512	
0023	Receipts From Federal Sources -8000	504,102			504,102	
0024	Notes and Loans Received (Repaid)					
0025	Interest Paid on Notes/Loans - 5100-830					
0026	Operating Transfers In (Out)/Residual Equity Trans					
0027	Operating Transfers In (Out) Primary Government / Comp Unit					
0028	Receipts From Refund of Prior Year Expenditures - 6991					
0029	Special and Extraordinary Gains (losses)					
0030	Receipts from Insurance Recoveries -9990					
Net Cash Prov By (Used for) Non-Capital Financing Activities		\$518,614			\$518,614	
Cash Flows From Capital and Related Financing Activities						
0031	Payments For Fac Acq, Const, and Imp - 4000					
0032	Gain / (Loss) on Sale of Fixed Assets - 6930					
0033	Proceeds From Extended Term Financing - 9200					
0034	Principal Paid on Financing Agreements					
0035	Interest Paid on Financing Agreements - 5100-830					
0036	(Inc) Dec in Contributed Capital					
Net Cash Prov By (Used for) Capital and Related Financing Activities						
Cash Flows From Investing Activities						
0041	Earnings on Investments - 6500					
0042	Purchase of Inv Securities / Deposits to Inv Pools					
0043	Receipts From Investment Pool Withdrawals					
0044	Proceeds from Sale and Maturity of Inv Securities					

LEA : 103028203 Riverview SD

Printed 11/30/2022 3:14:31 PM

0045 Loans Received (Paid)

Net Cash Prov By (Used for) Investing Activities

LEA : 103028203 Riverview SD

Printed 11/30/2022 3:14:31 PM

	<u>Food Service</u> <u>(51)</u>	<u>Child Care Operations</u> <u>(52)</u>	<u>Other Enterprise</u> <u>(58)</u>	<u>TOTAL</u>	<u>Internal Service</u> <u>(60)</u>
Net Increase (Decrease) in Cash Flows	87,746			87,746	
0004 Cash and Cash Equivalents Beginning of Year	90,916			90,916	
Cash and Cash Equivalents at Year End	\$178,662			\$178,662	
<hr/>					
Reconciliation of Operating Income (Loss) To Net Cash Provided by (Used For) Operating Activities					
0005 Operating Income (Loss) per REP	(506,598)			(506,598)	
Adjustments					
0051 Depreciation and Net Amortization	8,450			8,450	
0052 Provision for Uncollectible Accounts					
0053 Other Adjustments	52,981			52,981	
Effect of Changes in Assets, Liabilities, Deferred Outflows and Deferred Inflows					
0054 (Inc) Dec In Accounts Receivable (0120-0150)					
0055 Advances to Other Funds (0160)					
0056 (Inc) Dec in Inventories (0170)	971			971	
0057 (Inc) Dec in Prepaid Expenses (0180)					
0058 (Inc) Dec in Other Current or Noncurrent Assets					
0064 Deferred Outflows (0910)					
0059 Inc (Dec) in Accounts Payable (0400-0450)	7,076			7,076	
0060 Inc (Dec) in Accrued Salaries/Benefits (0461)					
0065 Inc (Dec) in Net Pension Liabilities (0570)					
0066 Inc (Dec) in Other Postemp Benefit Oblig (0560)					
0061 Inc (Dec) in Payroll Deductions/Withholding (0462)					
0062 Inc (Dec) in Unearned Revenue (0480)	6,252			6,252	
0063 Inc (Dec) in Other Current or Noncurrent Liabilities					
0067 Deferred Inflows (0950)					
Total Adjustments	\$75,730			\$75,730	
Cash Provided By (Used for) Total	(\$430,868)			(\$430,868)	
<hr/>					

COMBINED STATEMENT OF CASH FLOWS
SCHEDULE OF NONCASH INVESTING, CAPITAL, AND FINANCING ACTIVITIES

Explanation of Transaction and Balance Sheet Effect	Amount
'During the year ended June 30, 2022, the School District received \$50,799 of U.S.D.A. Donated Commodities in the Food Service Fund.	50,799
Total	\$50,799

LEA : 103028203 Riverview SD

Printed 11/30/2022 3:14:33 PM

Amounts Expressed in Whole Dollars	<u>Private Purpose Trust</u> <u>(71)</u>	<u>Investment Trust</u> <u>(72)</u>	<u>Pension Trust</u> <u>(73)</u>	<u>Student Activity Custodial</u> <u>(81)</u>
Assets And Deferred Outflows Of Resources				
Assets				
0100 Cash and Cash Equivalents	47,313			32,641
0110 Investments				
0130 Due From Other Funds				
0140 Due from Other Governments, Primary Government and Component Units				
0150 Other Receivables				
0170 Inventories				
0180 Prepaid Expenses (Expenditures)				
0190 Other Current Assets				
0220 Buildings and Building Improvements (Net)				
0230 Machinery, Equipment and Furniture (Net)				
Total Assets	\$47,313			\$32,641
0910 Deferred Outflows of Resources				
Total Assets And Deferred Outflows Of Resources	\$47,313			\$32,641

LEA : 103028203 Riverview SD

Printed 11/30/2022 3:14:33 PM

Amounts Expressed in Whole Dollars		<u>Other Custodial</u> <u>(89)</u>	<u>Fiduciary Component Units</u> <u>(98)</u>	<u>Total Fiduciary Funds</u>
Assets And Deferred Outflows Of Resources				
Assets				
0100	Cash and Cash Equivalents			79,954
0110	Investments			
0130	Due From Other Funds			
0140	Due from Other Governments, Primary Government and Component Units			
0150	Other Receivables			
0170	Inventories			
0180	Prepaid Expenses (Expenditures)			
0190	Other Current Assets			
0220	Buildings and Building Improvements (Net)			
0230	Machinery, Equipment and Furniture (Net)			
Total Assets				\$79,954
0910	Deferred Outflows of Resources			
Total Assets And Deferred Outflows Of Resources				\$79,954

LEA : 103028203 Riverview SD

Printed 11/30/2022 3:14:33 PM

Amounts Expressed in Whole Dollars	<u>Private Purpose Trust</u> <u>(71)</u>	<u>Investment Trust</u> <u>(72)</u>	<u>Pension Trust</u> <u>(73)</u>	<u>Student Activity Custodial</u> <u>(81)</u>
Liabilities, Deferred Inflows Of Resources And Net Position				
Liabilities				
0400 Due to Other Funds				
0410 Due to Other Governments, Primary Government and Component Units				
0420 Accounts Payable				
0430 Contracts Payable				
0450 Short-Term Payables				
0460 Payroll Accruals and Withholdings				
0480 Unearned Revenues				
0490 Other Current Liabilities				
Total Liabilities				
0950 Deferred Inflows of Resources				
Net Position				
0791 Net Investment in Capital Assets				
0009 Restricted Net Position (0792 – 0798)	47,313			32,641
0799 Unrestricted Net Position				
Total Net Position	\$47,313			\$32,641
Total Liabilities, Deferred Inflows Of Resources And Net Position	\$47,313			\$32,641

LEA : 103028203 Riverview SD

Printed 11/30/2022 3:14:33 PM

Amounts Expressed in Whole Dollars		<u>Other Custodial</u> <u>(89)</u>	<u>Fiduciary Component Units</u> <u>(98)</u>	<u>Total Fiduciary Funds</u>
Liabilities, Deferred Inflows Of Resources And Net Position				
Liabilities				
0400	Due to Other Funds			
0410	Due to Other Governments, Primary Government and Component Units			
0420	Accounts Payable			
0430	Contracts Payable			
0450	Short-Term Payables			
0460	Payroll Accruals and Withholdings			
0480	Unearned Revenues			
0490	Other Current Liabilities			
Total Liabilities				
0950	Deferred Inflows of Resources			
Net Position				
0791	Net Investment in Capital Assets			
0009	Restricted Net Position (0792 – 0798)			79,954
0799	Unrestricted Net Position			
Total Net Position				\$79,954
Total Liabilities, Deferred Inflows Of Resources And Net Position				\$79,954

Amounts Expressed in Whole Dollars	<u>Private Purpose Trust</u> <u>(71)</u>	<u>Investment Trust</u> <u>(72)</u>	<u>Pension Trust</u> <u>(73)</u>	<u>Student Activity</u> <u>Custodial</u> <u>(81)</u>	<u>Other Custodial</u> <u>(89)</u>	<u>Fiduciary Component</u> <u>Units</u> <u>(98)</u>
Additions						
0091 Gifts and Contributions						
0095 Net Investment Earnings	10			16		
0092 Other Additions				82,238		
Deductions						
0093 Scholarships Awarded	6,750					
0094 Other Deductions				85,444		
Change In Net Position	(\$6,740)			(\$3,190)		
0006 Net Position – Beginning of Fiscal Year	54,053			35,831		
0007 Net Position Held in Trust for Pension Benefits						
Net Position - End of Fiscal Year	\$47,313			\$32,641		

LEA : 103028203 Riverview SD

Printed 11/30/2022 3:14:36 PM

Amounts Expressed in Whole Dollars		<u>Total Fiduciary</u>
		<u>Funds</u>
Additions		
0091	Gifts and Contributions	
0095	Net Investment Earnings	26
0092	Other Additions	82,238
Deductions		
0093	Scholarships Awarded	6,750
0094	Other Deductions	85,444
Change In Net Position		(\$9,930)
0006	Net Position – Beginning of Fiscal Year	89,884
0007	Net Position Held in Trust for Pension Benefits	
Net Position - End of Fiscal Year		\$79,954

	Revenue Reported In Current Year	Current Year Tax Accrual	Prior Year Tax Accrual	Taxes Collected In Current Year
Revenue from Local Sources				
6111 Current Real Estate Taxes	15,000,646.00			15,000,646.00
6113 Public Utility Realty Taxes	17,196.00			17,196.00
6143 Current Act 511 Local Services Taxes	20,680.00			20,680.00
6151 Current Act 511 Earned Income Taxes	1,287,632.00			1,287,632.00
6153 Current Act 511 Real Estate Transfer Taxes	374,647.00			374,647.00
6411 Delinquent Real Estate Taxes	828,049.00			828,049.00
6431 Delinquent Act 1 Earned Income Taxes	458,785.00			458,785.00
6500 Earnings on Investments	12,643.00			
6700 Revenues from LEA Activities	15,112.00			
6832 Federal IDEA Revenue Received as Pass Through	227,989.00			
6910 Rentals	7,260.00			
6920 Contributions and Donations from Private Sources	2,456.00			
6999 Other Revenues Not Specified Above	23,599.00			
TOTAL Revenue from Local Sources	\$18,276,694.00			\$17,987,635.00

	Revenue Reported In Current Year			
<u>Revenue from State Sources</u>				
7111 Basic Education Funding-Formula	3,226,249.00			
7112 Basic Education Funding-Social Security	366,986.00			
7160 Tuition for Orphans Subsidy	13,946.00			
7271 Special Education funds for School-Aged Pupils	721,532.00			
7311 Pupil Transportation Subsidy	201,572.00			
7312 Nonpublic and Charter School Pupil Transportation Subsidy	23,485.00			
7320 Rental and Sinking Fund Payments / Building Reimbursement Subsidy	200,156.00			
7330 Health Services (Medical, Dental, Nurse, Act 25)	16,462.00			
7340 State Property Tax Reduction Allocation	357,272.00			
7505 Ready to Learn Block Grant	126,151.00			
7820 State Share of Retirement Contributions	1,735,165.00			
TOTAL Revenue from State Sources	\$6,988,976.00			

Revenue Reported In Current Year				
Revenue from Federal Sources				
8512	IDEA, Part B	2,576.00		
8514	NCLB, Title I - Improving the Academic Achievement of the Disadvantaged	186,061.00		
8515	NCLB, Title II - Preparing, Training and Recruiting High Quality Teachers and Principals	29,882.00		
8517	NCLB, Title IV - 21St Century Schools	14,139.00		
8690	Other Restricted Federal Grants-in-Aid Through the Commonwealth of PA	35,780.00		
8743	ESSER II - Elementary and Secondary School Emergency Relief Fund	678,838.00		
8744	ARP ESSER - Elementary and Secondary School Emergency Relief Fund	216,298.00		
8751	ARP ESSER Learning Loss	7,797.00		
8810	School-Based Access Medicaid Reimbursement Program (SBAP) Reimbursements (Access)	75,587.00		
8820	Medical Assistance Reimbursement for Administrative Claiming (Quarterly) Program	1,626.00		
TOTAL Revenue from Federal Sources		\$1,248,584.00		
TOTAL FROM ALL SOURCES		\$26,514,254.00		\$17,987,635.00

LEA : 103028203 Riverview SD

Printed 11/30/2022 3:14:40 PM

	<u>General Fund (10)</u>	<u>Student Sponsored Activity Fund (21)</u>	<u>Public Purpose Trust (27)</u>	<u>Other Compt Approved (28)</u>	<u>Athletic / Activity (29)</u>	<u>Capital Reserve (690, 1850) (31)</u>
6000 Revenue from Local Sources						
6111 Current Real Estate Taxes	15,000,646.00					
6113 Public Utility Realty Taxes	17,196.00					
6143 Current Act 511 Local Services Taxes	20,680.00					
6151 Current Act 511 Earned Income Taxes	1,287,632.00					
6153 Current Act 511 Real Estate Transfer Taxes	374,647.00					
6411 Delinquent Real Estate Taxes	828,049.00					
6431 Delinquent Act 1 Earned Income Taxes	458,785.00					
6500 Earnings on Investments	12,643.00					
6700 Revenues from LEA Activities	15,112.00					
6832 Federal IDEA Revenue Received as Pass Through	227,989.00					
6910 Rentals	7,260.00					
6920 Contributions and Donations from Private Sources	2,456.00					
6999 Other Revenues Not Specified Above	23,599.00					
6000 Total Revenue from Local Sources	\$18,276,694.00					
7000 Revenue from State Sources						
7111 Basic Education Funding-Formula	3,226,249.00					
7112 Basic Education Funding-Social Security	366,986.00					
7160 Tuition for Orphans Subsidy	13,946.00					
7271 Special Education funds for School-Aged Pupils	721,532.00					
7311 Pupil Transportation Subsidy	201,572.00					
7312 Nonpublic and Charter School Pupil Transportation Subsidy	23,485.00					
7320 Rental and Sinking Fund Payments / Building Reimbursement Subsidy	200,156.00					
7330 Health Services (Medical, Dental, Nurse, Act 25)	16,462.00					
7340 State Property Tax Reduction Allocation	357,272.00					
7505 Ready to Learn Block Grant	126,151.00					
7820 State Share of Retirement Contributions	1,735,165.00					
7000 Total Revenue from State Sources	\$6,988,976.00					
8000 Revenue from Federal Sources						
8512 IDEA, Part B	2,576.00					
8514 NCLB, Title I - Improving the Academic Achievement of the Disadvantaged	186,061.00					
8515 NCLB, Title II - Preparing, Training and Recruiting High Quality Teachers and Principals	29,882.00					
8517 NCLB, Title IV - 21St Century Schools	14,139.00					
8690 Other Restricted Federal Grants-in-Aid Through the Commonwealth of PA	35,780.00					
8743 ESSER II - Elementary and Secondary School Emergency Relief Fund	678,838.00					

LEA : 103028203 Riverview SD

Printed 11/30/2022 3:14:40 PM

	<u>Capital Reserve</u> <u>(1431) (32)</u>	<u>Other Capital</u> <u>Projects Fund (39)</u>	<u>Debt Service (40)</u>	<u>Permanent (90)</u>	<u>Total</u>
6000 Revenue from Local Sources					
6111 Current Real Estate Taxes					15,000,646.00
6113 Public Utility Realty Taxes					17,196.00
6143 Current Act 511 Local Services Taxes					20,680.00
6151 Current Act 511 Earned Income Taxes					1,287,632.00
6153 Current Act 511 Real Estate Transfer Taxes					374,647.00
6411 Delinquent Real Estate Taxes					828,049.00
6431 Delinquent Act 1 Earned Income Taxes					458,785.00
6500 Earnings on Investments	5,093.00	3,581.00			21,317.00
6700 Revenues from LEA Activities					15,112.00
6832 Federal IDEA Revenue Received as Pass Through					227,989.00
6910 Rentals					7,260.00
6920 Contributions and Donations from Private Sources					2,456.00
6999 Other Revenues Not Specified Above					23,599.00
6000 Total Revenue from Local Sources	\$5,093.00	\$3,581.00			\$18,285,368.00
7000 Revenue from State Sources					
7111 Basic Education Funding-Formula					3,226,249.00
7112 Basic Education Funding-Social Security					366,986.00
7160 Tuition for Orphans Subsidy					13,946.00
7271 Special Education funds for School-Aged Pupils					721,532.00
7311 Pupil Transportation Subsidy					201,572.00
7312 Nonpublic and Charter School Pupil Transportation Subsidy					23,485.00
7320 Rental and Sinking Fund Payments / Building Reimbursement Subsidy					200,156.00
7330 Health Services (Medical, Dental, Nurse, Act 25)					16,462.00
7340 State Property Tax Reduction Allocation					357,272.00
7505 Ready to Learn Block Grant					126,151.00
7820 State Share of Retirement Contributions					1,735,165.00
7000 Total Revenue from State Sources					\$6,988,976.00
8000 Revenue from Federal Sources					
8512 IDEA, Part B					2,576.00
8514 NCLB, Title I - Improving the Academic Achievement of the Disadvantaged					186,061.00
8515 NCLB, Title II - Preparing, Training and Recruiting High Quality Teachers and Principals					29,882.00
8517 NCLB, Title IV - 21st Century Schools					14,139.00
8690 Other Restricted Federal Grants-in-Aid Through the Commonwealth of PA					35,780.00
8743 ESSER II - Elementary and Secondary School Emergency Relief Fund					678,838.00

LEA : 103028203 Riverview SD

Printed 11/30/2022 3:14:40 PM

	<u>General Fund (10)</u>	<u>Student Sponsored Activity Fund (21)</u>	<u>Public Purpose Trust (27)</u>	<u>Other Compt Approved (28)</u>	<u>Athletic / Activity (29)</u>	<u>Capital Reserve (690, 1850) (31)</u>
8000 Revenue from Federal Sources						
8744 ARP ESSER - Elementary and Secondary School Emergency Relief Fund	216,298.00					
8751 ARP ESSER Learning Loss	7,797.00					
8810 School-Based Access Medicaid Reimbursement Program (SBAP) Reimbursements (Access)	75,587.00					
8820 Medical Assistance Reimbursement for Administrative Claiming (Quarterly) Program	1,626.00					
8000 Total Revenue from Federal Sources	\$1,248,584.00					
9000 Other Financing Sources						
9310 General Fund Transfers						
9000 Total Other Financing Sources						
Total From All Sources	\$26,514,254.00					

LEA : 103028203 Riverview SD

Printed 11/30/2022 3:14:40 PM

	<u>Capital Reserve</u> <u>(1431) (32)</u>	<u>Other Capital</u> <u>Projects Fund (39)</u>	<u>Debt Service (40)</u>	<u>Permanent (90)</u>	<u>Total</u>
8000 Revenue from Federal Sources					
8744 ARP ESSER - Elementary and Secondary School Emergency Relief Fund					216,298.00
8751 ARP ESSER Learning Loss					7,797.00
8810 School-Based Access Medicaid Reimbursement Program (SBAP) Reimbursements (Access)					75,587.00
8820 Medical Assistance Reimbursement for Administrative Claiming (Quarterly) Program					1,626.00
8000 Total Revenue from Federal Sources					\$1,248,584.00
9000 Other Financing Sources					
9310 General Fund Transfers	1,400,000.00				1,400,000.00
9000 Total Other Financing Sources	\$1,400,000.00				\$1,400,000.00
Total From All Sources	\$1,405,093.00	\$3,581.00			\$27,922,928.00

LEA : 103028203 Riverview SD

Printed 11/30/2022 3:14:43 PM

	<u>General Fund (10)</u>	<u>Student Sponsored Activity Fund (21)</u>	<u>Public Purpose Trust (27)</u>	<u>Other Compt Approved (28)</u>	<u>Athletic / Activity (29)</u>	<u>Capital Reserve (690. 1850) (31)</u>
Revenue from Local Sources	18,276,694.00					
Revenue from State Sources	6,988,976.00					
Revenue from Federal Sources	1,248,584.00					
Other Financing Sources						
Total From All Sources	\$26,514,254.00					

LEA : 103028203 Riverview SD

Printed 11/30/2022 3:14:43 PM

	<u>Capital Reserve (1431)</u> <u>(32)</u>	<u>Other Capital Projects</u> <u>Fund (39)</u>	<u>Debt Service (40)</u>	<u>Permanent (90)</u>	<u>Total</u>
Revenue from Local Sources	5,093.00	3,581.00			18,285,368.00
Revenue from State Sources					6,988,976.00
Revenue from Federal Sources					1,248,584.00
Other Financing Sources	1,400,000.00				1,400,000.00
Total From All Sources	\$1,405,093.00	\$3,581.00			\$27,922,928.00

LEA : 103028203 Riverview SD

Printed 11/30/2022 3:14:49 PM

General Fund (10)

1000 Instruction	Total
100 <u>Personnel Services – Salaries</u>	
100 Personnel Services – Salaries	7,237,928.00
Total Personnel Services – Salaries	\$7,237,928.00
200 <u>Personnel Services – Employee Benefits</u>	
210 Group Insurance – Contracted Provider	1,466,982.00
220 Social Security Contributions	525,573.00
230 PSERS Retirement Contributions	2,594,244.00
260 Workers' Compensation	46,937.00
280 Other Post-Employment Benefits (OPEB)	81,522.00
Total Personnel Services – Employee Benefits	\$4,715,258.00
300 <u>Purchased Professional and Technical Services</u>	
322 Professional Educational Services – Ius	378,526.00
329 Professional Educational Services – Other	135,199.00
330 Other Professional Services	255,341.00
390 Other Purchased Professional and Technical Services	37,192.00
Total Purchased Professional and Technical Services	\$806,258.00
400 <u>Purchased Property Services</u>	
430 Repairs and Maintenance Services	1,998.00
Total Purchased Property Services	\$1,998.00
500 <u>Other Purchased Services</u>	
510 Student Transportation Services	29,851.00
562 Tuition To Pennsylvania Charter Schools	573,574.00
564 Tuition To Career and Technology Centers	144,440.00
567 Tuition To Approved Private Schools (APS) and PA Chartered Schools for the Deaf and Blind	390,869.00
568 Tuition To Private Residential Rehabilitative Institutions (PRRI) [In-State] and Detention Centers	119,348.00
569 Tuition – Other	15,500.00
580 Travel	7,844.00
Total Other Purchased Services	\$1,281,426.00
600 <u>Supplies</u>	
610 General Supplies	130,168.00
640 Books and Periodicals	18,286.00
Total Supplies	\$148,454.00
700 <u>Property</u>	
752 Capital Equipment – Original and Additional	2,835.00
758 Capitalized Technology Software - Original	21,266.00
762 Capitalized Equipment - Replacement	1,222.00
Total Property	\$25,323.00
800 <u>Other Objects</u>	
890 Miscellaneous Expenditures	21,788.00
Total Other Objects	\$21,788.00
Total 1000 Instruction	\$14,238,433.00

LEA : 103028203 Riverview SD

Printed 11/30/2022 3:14:49 PM

General Fund (10)

1100 Regular Programs – Elementary / Secondary	Elementary	Secondary	Federal	Total
100 Personnel Services – Salaries				
100 Personnel Services – Salaries	3,270,685.00	2,436,829.00	285,324.00	5,992,838.00
Total Personnel Services – Salaries	\$3,270,685.00	\$2,436,829.00	\$285,324.00	\$5,992,838.00
200 Personnel Services – Employee Benefits				
210 Group Insurance – Contracted Provider	592,340.00	584,170.00	28,435.00	1,204,945.00
220 Social Security Contributions	239,236.00	192,356.00	1,622.00	433,214.00
230 PSERS Retirement Contributions	1,230,303.00	922,040.00	7,604.00	2,159,947.00
260 Workers' Compensation	23,736.00	16,333.00		40,069.00
280 Other Post-Employment Benefits (OPEB)	32,609.00	48,913.00		81,522.00
Total Personnel Services – Employee Benefits	\$2,118,224.00	\$1,763,812.00	\$37,661.00	\$3,919,697.00
300 Purchased Professional and Technical Services				
329 Professional Educational Services – Other	4,763.00			4,763.00
330 Other Professional Services	87,370.00	46,913.00	35,000.00	169,283.00
390 Other Purchased Professional and Technical Services	1,863.00	21,948.00		23,811.00
Total Purchased Professional and Technical Services	\$93,996.00	\$68,861.00	\$35,000.00	\$197,857.00
400 Purchased Property Services				
430 Repairs and Maintenance Services	180.00	1,818.00		1,998.00
Total Purchased Property Services	\$180.00	\$1,818.00		\$1,998.00
500 Other Purchased Services				
510 Student Transportation Services	13,701.00	12,549.00		26,250.00
562 Tuition To Pennsylvania Charter Schools	257,701.00	315,873.00		573,574.00
580 Travel	1,995.00	5,017.00		7,012.00
Total Other Purchased Services	\$273,397.00	\$333,439.00		\$606,836.00
600 Supplies				
610 General Supplies	35,682.00	21,913.00	35,780.00	93,375.00
640 Books and Periodicals	12,947.00	4,078.00		17,025.00
Total Supplies	\$48,629.00	\$25,991.00	\$35,780.00	\$110,400.00
700 Property				
758 Capitalized Technology Software - Original	6,146.00		11,339.00	17,485.00
Total Property	\$6,146.00		\$11,339.00	\$17,485.00
800 Other Objects				
890 Miscellaneous Expenditures	50.00	21,738.00		21,788.00
Total Other Objects	\$50.00	\$21,738.00		\$21,788.00
Total 1100 Regular Programs – Elementary / Secondary	\$5,811,307.00	\$4,652,488.00	\$405,104.00	\$10,868,899.00

LEA : 103028203 Riverview SD

Printed 11/30/2022 3:14:49 PM

General Fund (10)

1110 Regular Programs

	<u>Elementary</u>	<u>Secondary</u>	<u>Federal</u>	<u>Total</u>
100 <u>Personnel Services – Salaries</u>				
100 Personnel Services – Salaries	3,270,685.00	2,436,829.00	285,324.00	5,992,838.00
Total Personnel Services – Salaries	\$3,270,685.00	\$2,436,829.00	\$285,324.00	\$5,992,838.00
200 <u>Personnel Services – Employee Benefits</u>				
210 Group Insurance – Contracted Provider	592,340.00	584,170.00	28,435.00	1,204,945.00
220 Social Security Contributions	239,236.00	192,356.00	1,622.00	433,214.00
230 PSERS Retirement Contributions	1,230,303.00	922,040.00	7,604.00	2,159,947.00
260 Workers' Compensation	23,736.00	16,333.00		40,069.00
280 Other Post-Employment Benefits (OPEB)	32,609.00	48,913.00		81,522.00
Total Personnel Services – Employee Benefits	\$2,118,224.00	\$1,763,812.00	\$37,661.00	\$3,919,697.00
300 <u>Purchased Professional and Technical Services</u>				
329 Professional Educational Services – Other	4,763.00			4,763.00
330 Other Professional Services	87,370.00	46,913.00	35,000.00	169,283.00
390 Other Purchased Professional and Technical Services	1,863.00	21,948.00		23,811.00
Total Purchased Professional and Technical Services	\$93,996.00	\$68,861.00	\$35,000.00	\$197,857.00
400 <u>Purchased Property Services</u>				
430 Repairs and Maintenance Services	180.00	1,818.00		1,998.00
Total Purchased Property Services	\$180.00	\$1,818.00		\$1,998.00
500 <u>Other Purchased Services</u>				
510 Student Transportation Services	13,701.00	12,549.00		26,250.00
562 Tuition To Pennsylvania Charter Schools	257,701.00	315,873.00		573,574.00
580 Travel	1,995.00	5,017.00		7,012.00
Total Other Purchased Services	\$273,397.00	\$333,439.00		\$606,836.00
600 <u>Supplies</u>				
610 General Supplies	35,682.00	21,913.00	35,780.00	93,375.00
640 Books and Periodicals	12,947.00	4,078.00		17,025.00
Total Supplies	\$48,629.00	\$25,991.00	\$35,780.00	\$110,400.00
700 <u>Property</u>				
758 Capitalized Technology Software - Original	6,146.00		11,339.00	17,485.00
Total Property	\$6,146.00		\$11,339.00	\$17,485.00
800 <u>Other Objects</u>				
890 Miscellaneous Expenditures	50.00	21,738.00		21,788.00
Total Other Objects	\$50.00	\$21,738.00		\$21,788.00
Total 1110 Regular Programs	\$5,811,307.00	\$4,652,488.00	\$405,104.00	\$10,868,899.00

LEA : 103028203 Riverview SD

Printed 11/30/2022 3:14:49 PM

General Fund (10)				
1200 Special Programs – Elementary / Secondary	<u>Elementary</u>	<u>Secondary</u>	<u>Federal</u>	<u>Total</u>
100 <u>Personnel Services – Salaries</u>				
100 Personnel Services – Salaries	411,528.00	392,201.00	227,445.00	1,031,174.00
Total Personnel Services – Salaries	\$411,528.00	\$392,201.00	\$227,445.00	\$1,031,174.00
200 <u>Personnel Services – Employee Benefits</u>				
210 Group Insurance – Contracted Provider	77,645.00	110,329.00		187,974.00
220 Social Security Contributions	37,117.00	39,300.00		76,417.00
230 PSERS Retirement Contributions	175,296.00	184,259.00		359,555.00
260 Workers' Compensation	1,454.00	4,015.00		5,469.00
Total Personnel Services – Employee Benefits	\$291,512.00	\$337,903.00		\$629,415.00
300 <u>Purchased Professional and Technical Services</u>				
322 Professional Educational Services – Ius	156,467.00	208,195.00		364,662.00
329 Professional Educational Services – Other	27,166.00	103,270.00		130,436.00
330 Other Professional Services	68,453.00	2,848.00	14,757.00	86,058.00
390 Other Purchased Professional and Technical Services		13,381.00		13,381.00
Total Purchased Professional and Technical Services	\$252,086.00	\$327,694.00	\$14,757.00	\$594,537.00
500 <u>Other Purchased Services</u>				
510 Student Transportation Services	58.00	3,543.00		3,601.00
567 Tuition To Approved Private Schools (APS) and PA Chartered Schools for the Deaf and Blind	334,167.00	30,731.00		364,898.00
568 Tuition To Private Residential Rehabilitative Institutions (PRRI) [In-State] and Detention Centers	43,421.00	74,889.00		118,310.00
580 Travel	5.00	827.00		832.00
Total Other Purchased Services	\$377,651.00	\$109,990.00		\$487,641.00
600 <u>Supplies</u>				
610 General Supplies	1,544.00	2,630.00	534.00	4,708.00
640 Books and Periodicals	1,237.00	24.00		1,261.00
Total Supplies	\$2,781.00	\$2,654.00	\$534.00	\$5,969.00
700 <u>Property</u>				
758 Capitalized Technology Software - Original	2,053.00	1,728.00		3,781.00
Total Property	\$2,053.00	\$1,728.00		\$3,781.00
Total 1200 Special Programs – Elementary / Secondary	\$1,337,611.00	\$1,172,170.00	\$242,736.00	\$2,752,517.00

LEA : 103028203 Riverview SD

Printed 11/30/2022 3:14:49 PM

General Fund (10)

1220 Sensory Support	Elementary	Secondary	Federal	Total
100 Personnel Services – Salaries				
100 Personnel Services – Salaries	60,759.00	15,190.00		75,949.00
Total Personnel Services – Salaries	\$60,759.00	\$15,190.00		\$75,949.00
200 Personnel Services – Employee Benefits				
210 Group Insurance – Contracted Provider	15,839.00	4,346.00		20,185.00
220 Social Security Contributions	4,514.00	1,128.00		5,642.00
230 PSERS Retirement Contributions	21,229.00	5,307.00		26,536.00
260 Workers' Compensation	508.00			508.00
Total Personnel Services – Employee Benefits	\$42,090.00	\$10,781.00		\$52,871.00
300 Purchased Professional and Technical Services				
322 Professional Educational Services – Ius	3,500.00			3,500.00
329 Professional Educational Services – Other	27,166.00	103,270.00		130,436.00
330 Other Professional Services	21,829.00	1,270.00		23,099.00
Total Purchased Professional and Technical Services	\$52,495.00	\$104,540.00		\$157,035.00
700 Property				
758 Capitalized Technology Software - Original	1,599.00	1,728.00		3,327.00
Total Property	\$1,599.00	\$1,728.00		\$3,327.00
Total 1220 Sensory Support	\$156,943.00	\$132,239.00		\$289,182.00

LEA : 103028203 Riverview SD

Printed 11/30/2022 3:14:49 PM

General Fund (10)

1230 Emotional Support	Elementary	Secondary	Federal	Total
300 <u>Purchased Professional and Technical Services</u>				
322 Professional Educational Services – Ius	112,995.00	169,492.00		282,487.00
330 Other Professional Services	1,000.00	1,500.00		2,500.00
390 Other Purchased Professional and Technical Services		13,381.00		13,381.00
Total Purchased Professional and Technical Services	\$113,995.00	\$184,373.00		\$298,368.00
500 <u>Other Purchased Services</u>				
567 Tuition To Approved Private Schools (APS) and PA Chartered Schools for the Deaf and Blind	18,550.00	30,731.00		49,281.00
568 Tuition To Private Residential Rehabilitative Institutions (PRRI) [In-State] and Detention Centers	43,421.00	74,889.00		118,310.00
Total Other Purchased Services	\$61,971.00	\$105,620.00		\$167,591.00
600 <u>Supplies</u>				
610 General Supplies	258.00			258.00
640 Books and Periodicals	838.00			838.00
Total Supplies	\$1,096.00			\$1,096.00
700 <u>Property</u>				
758 Capitalized Technology Software - Original	454.00			454.00
Total Property	\$454.00			\$454.00
Total 1230 Emotional Support	\$177,516.00	\$289,993.00		\$467,509.00

LEA : 103028203 Riverview SD

Printed 11/30/2022 3:14:49 PM

General Fund (10)

1240 Academic Support	Elementary	Secondary	Federal	Total
100 Personnel Services – Salaries				
100 Personnel Services – Salaries	350,769.00	377,011.00	227,445.00	955,225.00
Total Personnel Services – Salaries	\$350,769.00	\$377,011.00	\$227,445.00	\$955,225.00
200 Personnel Services – Employee Benefits				
210 Group Insurance – Contracted Provider	61,806.00	105,983.00		167,789.00
220 Social Security Contributions	32,603.00	38,172.00		70,775.00
230 PSERS Retirement Contributions	154,067.00	178,952.00		333,019.00
260 Workers' Compensation	946.00	4,015.00		4,961.00
Total Personnel Services – Employee Benefits	\$249,422.00	\$327,122.00		\$576,544.00
300 Purchased Professional and Technical Services				
322 Professional Educational Services – Ius	39,972.00	38,703.00		78,675.00
330 Other Professional Services	2,475.00			2,475.00
Total Purchased Professional and Technical Services	\$42,447.00	\$38,703.00		\$81,150.00
500 Other Purchased Services				
510 Student Transportation Services	58.00	3,543.00		3,601.00
580 Travel	5.00	827.00		832.00
Total Other Purchased Services	\$63.00	\$4,370.00		\$4,433.00
600 Supplies				
610 General Supplies	1,286.00	2,630.00	534.00	4,450.00
640 Books and Periodicals	399.00	24.00		423.00
Total Supplies	\$1,685.00	\$2,654.00	\$534.00	\$4,873.00
Total 1240 Academic Support	\$644,386.00	\$749,860.00	\$227,979.00	\$1,622,225.00

LEA : 103028203 Riverview SD

Printed 11/30/2022 3:14:49 PM

General Fund (10)

1241 Learning Support – Public	Elementary	Secondary	Federal	Total
100 Personnel Services – Salaries				
100 Personnel Services – Salaries	257,559.00	303,527.00	227,445.00	788,531.00
Total Personnel Services – Salaries	\$257,559.00	\$303,527.00	\$227,445.00	\$788,531.00
200 Personnel Services – Employee Benefits				
210 Group Insurance – Contracted Provider	45,004.00	90,349.00		135,353.00
220 Social Security Contributions	25,670.00	32,785.00		58,455.00
230 PSERS Retirement Contributions	121,499.00	153,277.00		274,776.00
260 Workers' Compensation	946.00	2,899.00		3,845.00
Total Personnel Services – Employee Benefits	\$193,119.00	\$279,310.00		\$472,429.00
300 Purchased Professional and Technical Services				
322 Professional Educational Services – Ius	39,972.00	38,703.00		78,675.00
Total Purchased Professional and Technical Services	\$39,972.00	\$38,703.00		\$78,675.00
500 Other Purchased Services				
580 Travel	5.00	8.00		13.00
Total Other Purchased Services	\$5.00	\$8.00		\$13.00
600 Supplies				
610 General Supplies	536.00	107.00	534.00	1,177.00
Total Supplies	\$536.00	\$107.00	\$534.00	\$1,177.00
Total 1241 Learning Support – Public	\$491,191.00	\$621,655.00	\$227,979.00	\$1,340,825.00

LEA : 103028203 Riverview SD

Printed 11/30/2022 3:14:49 PM

General Fund (10)

1243 Gifted Support

	<u>Elementary</u>	<u>Secondary</u>	<u>Federal</u>	<u>Total</u>
100 <u>Personnel Services – Salaries</u>				
100 Personnel Services – Salaries	93,210.00	73,484.00		166,694.00
Total Personnel Services – Salaries	\$93,210.00	\$73,484.00		\$166,694.00
200 <u>Personnel Services – Employee Benefits</u>				
210 Group Insurance – Contracted Provider	16,802.00	15,634.00		32,436.00
220 Social Security Contributions	6,933.00	5,387.00		12,320.00
230 PSERS Retirement Contributions	32,568.00	25,675.00		58,243.00
260 Workers' Compensation		1,116.00		1,116.00
Total Personnel Services – Employee Benefits	\$56,303.00	\$47,812.00		\$104,115.00
300 <u>Purchased Professional and Technical Services</u>				
330 Other Professional Services	2,475.00			2,475.00
Total Purchased Professional and Technical Services	\$2,475.00			\$2,475.00
500 <u>Other Purchased Services</u>				
510 Student Transportation Services	58.00	3,543.00		3,601.00
580 Travel		819.00		819.00
Total Other Purchased Services	\$58.00	\$4,362.00		\$4,420.00
600 <u>Supplies</u>				
610 General Supplies	750.00	2,523.00		3,273.00
640 Books and Periodicals	399.00	24.00		423.00
Total Supplies	\$1,149.00	\$2,547.00		\$3,696.00
Total 1243 Gifted Support	\$153,195.00	\$128,205.00		\$281,400.00

LEA : 103028203 Riverview SD

Printed 11/30/2022 3:14:49 PM

General Fund (10)

1270 Multi-Handicapped Support	<u>Elementary</u>	<u>Secondary</u>	<u>Federal</u>	<u>Total</u>
300 <u>Purchased Professional and Technical Services</u>				
330 Other Professional Services	43,097.00			43,097.00
Total Purchased Professional and Technical Services	\$43,097.00			\$43,097.00
Total 1270 Multi-Handicapped Support	\$43,097.00			\$43,097.00

LEA : 103028203 Riverview SD

Printed 11/30/2022 3:14:49 PM

General Fund (10)

1290 Special Programs - Other Support	<u>Elementary</u>	<u>Secondary</u>	<u>Federal</u>	<u>Total</u>
300 <u>Purchased Professional and Technical Services</u>				
330 Other Professional Services	52.00	78.00	14,757.00	14,887.00
Total Purchased Professional and Technical Services	\$52.00	\$78.00	\$14,757.00	\$14,887.00
500 <u>Other Purchased Services</u>				
567 Tuition To Approved Private Schools (APS) and PA Chartered Schools for the Deaf and Blind	315,617.00			315,617.00
Total Other Purchased Services	\$315,617.00			\$315,617.00
Total 1290 Special Programs - Other Support	\$315,669.00	\$78.00	\$14,757.00	\$330,504.00

LEA : 103028203 Riverview SD

Printed 11/30/2022 3:14:49 PM

General Fund (10)

1300 Vocational Education

	<u>Elementary</u>	<u>Secondary</u>	<u>Federal</u>	<u>Total</u>
100 <u>Personnel Services – Salaries</u>				
100 Personnel Services – Salaries		197,546.00		197,546.00
Total Personnel Services – Salaries		\$197,546.00		\$197,546.00
200 <u>Personnel Services – Employee Benefits</u>				
210 Group Insurance – Contracted Provider		44,141.00		44,141.00
220 Social Security Contributions		14,722.00		14,722.00
230 PSERS Retirement Contributions		69,023.00		69,023.00
260 Workers' Compensation		1,315.00		1,315.00
Total Personnel Services – Employee Benefits		\$129,201.00		\$129,201.00
500 <u>Other Purchased Services</u>				
564 Tuition To Career and Technology Centers		144,440.00		144,440.00
Total Other Purchased Services		\$144,440.00		\$144,440.00
600 <u>Supplies</u>				
610 General Supplies		14,133.00		14,133.00
Total Supplies		\$14,133.00		\$14,133.00
700 <u>Property</u>				
752 Capital Equipment – Original and Additional		2,835.00		2,835.00
762 Capitalized Equipment - Replacement		1,222.00		1,222.00
Total Property		\$4,057.00		\$4,057.00
Total 1300 Vocational Education		\$489,377.00		\$489,377.00

LEA : 103028203 Riverview SD

Printed 11/30/2022 3:14:49 PM

General Fund (10)

1400 Other Instructional Programs – Elementary / Secondary	Elementary	Secondary	Federal	Total
100 Personnel Services – Salaries				
100 Personnel Services – Salaries	9,267.00	7,103.00		16,370.00
Total Personnel Services – Salaries	\$9,267.00	\$7,103.00		\$16,370.00
200 Personnel Services – Employee Benefits				
210 Group Insurance – Contracted Provider	7,606.00	22,316.00		29,922.00
220 Social Security Contributions	696.00	524.00		1,220.00
230 PSERS Retirement Contributions	3,237.00	2,482.00		5,719.00
260 Workers' Compensation	44.00	40.00		84.00
Total Personnel Services – Employee Benefits	\$11,583.00	\$25,362.00		\$36,945.00
300 Purchased Professional and Technical Services				
322 Professional Educational Services – Ius	5,546.00	8,318.00		13,864.00
Total Purchased Professional and Technical Services	\$5,546.00	\$8,318.00		\$13,864.00
500 Other Purchased Services				
567 Tuition To Approved Private Schools (APS) and PA Chartered Schools for the Deaf and Blind	10,388.00	15,583.00		25,971.00
568 Tuition To Private Residential Rehabilitative Institutions (PRRI) [In-State] and Detention Centers		1,038.00		1,038.00
569 Tuition – Other		15,500.00		15,500.00
Total Other Purchased Services	\$10,388.00	\$32,121.00		\$42,509.00
600 Supplies				
610 General Supplies	3,328.00	485.00	14,139.00	17,952.00
Total Supplies	\$3,328.00	\$485.00	\$14,139.00	\$17,952.00
Total 1400 Other Instructional Programs – Elementary / Secondary	\$40,112.00	\$73,389.00	\$14,139.00	\$127,640.00

LEA : 103028203 Riverview SD

Printed 11/30/2022 3:14:49 PM

General Fund (10)

1420 Summer School	<u>Elementary</u>	<u>Secondary</u>	<u>Federal</u>	<u>Total</u>
100 <u>Personnel Services – Salaries</u>				
100 Personnel Services – Salaries	4,735.00	7,103.00		11,838.00
Total Personnel Services – Salaries	\$4,735.00	\$7,103.00		\$11,838.00
200 <u>Personnel Services – Employee Benefits</u>				
210 Group Insurance – Contracted Provider	7,606.00	22,316.00		29,922.00
220 Social Security Contributions	349.00	524.00		873.00
230 PSERS Retirement Contributions	1,654.00	2,482.00		4,136.00
260 Workers' Compensation	27.00	40.00		67.00
Total Personnel Services – Employee Benefits	\$9,636.00	\$25,362.00		\$34,998.00
300 <u>Purchased Professional and Technical Services</u>				
322 Professional Educational Services – Ius	5,546.00	8,318.00		13,864.00
Total Purchased Professional and Technical Services	\$5,546.00	\$8,318.00		\$13,864.00
500 <u>Other Purchased Services</u>				
567 Tuition To Approved Private Schools (APS) and PA Chartered Schools for the Deaf and Blind	10,388.00	15,583.00		25,971.00
Total Other Purchased Services	\$10,388.00	\$15,583.00		\$25,971.00
Total 1420 Summer School	\$30,305.00	\$56,366.00		\$86,671.00

LEA : 103028203 Riverview SD

Printed 11/30/2022 3:14:49 PM

General Fund (10)

1430 Homebound Instruction	<u>Elementary</u>	<u>Secondary</u>	<u>Federal</u>	<u>Total</u>
100 <u>Personnel Services – Salaries</u>				
100 Personnel Services – Salaries	4,532.00			4,532.00
Total Personnel Services – Salaries	\$4,532.00			\$4,532.00
200 <u>Personnel Services – Employee Benefits</u>				
220 Social Security Contributions	347.00			347.00
230 PSERS Retirement Contributions	1,583.00			1,583.00
260 Workers’ Compensation	17.00			17.00
Total Personnel Services – Employee Benefits	\$1,947.00			\$1,947.00
Total 1430 Homebound Instruction	\$6,479.00			\$6,479.00

LEA : 103028203 Riverview SD

Printed 11/30/2022 3:14:49 PM

General Fund (10)

1440 Alternative Regular Education Programs

<u>Elementary</u>	<u>Secondary</u>	<u>Federal</u>	<u>Total</u>
-------------------	------------------	----------------	--------------

500 Other Purchased Services

568 Tuition To Private Residential Rehabilitative Institutions (PRRI) [In-State] and Detention Centers	1,038.00		1,038.00
--	----------	--	----------

569 Tuition – Other	15,500.00		15,500.00
---------------------	-----------	--	-----------

Total Other Purchased Services	\$16,538.00		\$16,538.00
Total 1440 Alternative Regular Education Programs	\$16,538.00		\$16,538.00

LEA : 103028203 Riverview SD

Printed 11/30/2022 3:14:49 PM

General Fund (10)

1441 Adjudicated / Court-Placed Programs	<u>Elementary</u>	<u>Secondary</u>	<u>Federal</u>	<u>Total</u>
500 <u>Other Purchased Services</u>				
568 Tuition To Private Residential Rehabilitative Institutions (PRRI) [In-State] and Detention Centers		1,038.00		1,038.00
Total Other Purchased Services		\$1,038.00		\$1,038.00
Total 1441 Adjudicated / Court-Placed Programs		\$1,038.00		\$1,038.00

LEA : 103028203 Riverview SD

Printed 11/30/2022 3:14:49 PM

General Fund (10)

1442 Alternative Education Programs	<u>Elementary</u>	<u>Secondary</u>	<u>Federal</u>	<u>Total</u>
500 <u>Other Purchased Services</u>				
569 Tuition – Other		15,500.00		15,500.00
Total Other Purchased Services		\$15,500.00		\$15,500.00
Total 1442 Alternative Education Programs		\$15,500.00		\$15,500.00

LEA : 103028203 Riverview SD

Printed 11/30/2022 3:14:49 PM

General Fund (10)

1490 Additional Other Instructional Programs	<u>Elementary</u>	<u>Secondary</u>	<u>Federal</u>	<u>Total</u>
600 <u>Supplies</u>				
610 General Supplies	3,328.00	485.00	14,139.00	17,952.00
Total Supplies	\$3,328.00	\$485.00	\$14,139.00	\$17,952.00
Total 1490 Additional Other Instructional Programs	\$3,328.00	\$485.00	\$14,139.00	\$17,952.00

LEA : 103028203 Riverview SD

Printed 11/30/2022 3:14:55 PM

General Fund (10)

2000 Support Services		<u>Total</u>
100 <u>Personnel Services – Salaries</u>		
100 Personnel Services – Salaries		2,807,847.00
Total Personnel Services – Salaries		\$2,807,847.00
200 <u>Personnel Services – Employee Benefits</u>		
210 Group Insurance – Contracted Provider		677,274.00
220 Social Security Contributions		207,665.00
230 PSERS Retirement Contributions		967,664.00
240 Tuition Reimbursement		50,325.00
260 Workers' Compensation		23,915.00
299 All Other Employee Benefits		16,314.00
Total Personnel Services – Employee Benefits		\$1,943,157.00
300 <u>Purchased Professional and Technical Services</u>		
330 Other Professional Services		459,286.00
390 Other Purchased Professional and Technical Services		8,346.00
Total Purchased Professional and Technical Services		\$467,632.00
400 <u>Purchased Property Services</u>		
410 Cleaning Services		72,799.00
420 Utility Services		23,136.00
430 Repairs and Maintenance Services		125,966.00
460 Extermination Services		1,555.00
Total Purchased Property Services		\$223,456.00
500 <u>Other Purchased Services</u>		
513 Contracted Carriers		863,183.00
520 Insurance – General		16,744.00
523 General Property and Liability Insurance		59,936.00
530 Communications		46,849.00
549 Other Advertising/Public Relations		24,477.00
580 Travel		3,184.00
595 IU Payments By Withholding		19,061.00
Total Other Purchased Services		\$1,033,434.00
600 <u>Supplies</u>		
610 General Supplies		478,525.00
620 Energy		304,529.00
640 Books and Periodicals		228,316.00
650 Supplies & Fees – Technology Related		4,272.00
Total Supplies		\$1,015,642.00
700 <u>Property</u>		
758 Capitalized Technology Software - Original		83,364.00
762 Capitalized Equipment - Replacement		345,792.00
766 Capitalized Technology Equipment – Replacement		4,069.00
Total Property		\$433,225.00

LEA : 103028203 Riverview SD

Printed 11/30/2022 3:14:55 PM

General Fund (10)		
2000 Support Services		<u>Total</u>
800	<u>Other Objects</u>	
810	Dues and Fees	52,315.00
890	Miscellaneous Expenditures	13.00
Total Other Objects		\$52,328.00
Total 2000 Support Services		\$7,976,721.00

LEA : 103028203 Riverview SD

Printed 11/30/2022 3:14:55 PM

General Fund (10)

2100 Support Services – Students	Elementary	Secondary	Federal	Total
100 <u>Personnel Services – Salaries</u>				
100 Personnel Services – Salaries	146,955.00	168,080.00		315,035.00
Total Personnel Services – Salaries	\$146,955.00	\$168,080.00		\$315,035.00
200 <u>Personnel Services – Employee Benefits</u>				
210 Group Insurance – Contracted Provider	30,223.00	44,294.00		74,517.00
220 Social Security Contributions	10,870.00	12,533.00		23,403.00
230 PSERS Retirement Contributions	51,346.00	58,727.00		110,073.00
260 Workers' Compensation	1,099.00	1,083.00		2,182.00
Total Personnel Services – Employee Benefits	\$93,538.00	\$116,637.00		\$210,175.00
300 <u>Purchased Professional and Technical Services</u>				
330 Other Professional Services		1,902.00	17,164.00	19,066.00
Total Purchased Professional and Technical Services		\$1,902.00	\$17,164.00	\$19,066.00
600 <u>Supplies</u>				
610 General Supplies		389.00		389.00
640 Books and Periodicals		3,782.00		3,782.00
Total Supplies		\$4,171.00		\$4,171.00
800 <u>Other Objects</u>				
890 Miscellaneous Expenditures		13.00		13.00
Total Other Objects		\$13.00		\$13.00
Total 2100 Support Services – Students	\$240,493.00	\$290,803.00	\$17,164.00	\$548,460.00

LEA : 103028203 Riverview SD

Printed 11/30/2022 3:14:55 PM

General Fund (10)

2120 Guidance Services	Elementary	Secondary	Federal	Total
100 Personnel Services – Salaries				
100 Personnel Services – Salaries	146,955.00	168,080.00		315,035.00
Total Personnel Services – Salaries	\$146,955.00	\$168,080.00		\$315,035.00
200 Personnel Services – Employee Benefits				
210 Group Insurance – Contracted Provider	30,223.00	44,294.00		74,517.00
220 Social Security Contributions	10,870.00	12,533.00		23,403.00
230 PSERS Retirement Contributions	51,346.00	58,727.00		110,073.00
260 Workers' Compensation	1,099.00	1,083.00		2,182.00
Total Personnel Services – Employee Benefits	\$93,538.00	\$116,637.00		\$210,175.00
300 Purchased Professional and Technical Services				
330 Other Professional Services		1,902.00		1,902.00
Total Purchased Professional and Technical Services		\$1,902.00		\$1,902.00
600 Supplies				
610 General Supplies		389.00		389.00
640 Books and Periodicals		3,782.00		3,782.00
Total Supplies		\$4,171.00		\$4,171.00
800 Other Objects				
890 Miscellaneous Expenditures		13.00		13.00
Total Other Objects		\$13.00		\$13.00
Total 2120 Guidance Services	\$240,493.00	\$290,803.00		\$531,296.00

LEA : 103028203 Riverview SD

Printed 11/30/2022 3:14:55 PM

General Fund (10)

2140 Psychological Services

300 Purchased Professional and Technical Services

	<u>Elementary</u>	<u>Secondary</u>	<u>Federal</u>	<u>Total</u>
330 Other Professional Services			9,368.00	9,368.00
Total Purchased Professional and Technical Services			\$9,368.00	\$9,368.00
Total 2140 Psychological Services			\$9,368.00	\$9,368.00

LEA : 103028203 Riverview SD

Printed 11/30/2022 3:14:55 PM

General Fund (10)

2160 Social Work Services

	<u>Elementary</u>	<u>Secondary</u>	<u>Federal</u>	<u>Total</u>
300 <u>Purchased Professional and Technical Services</u>				
330 Other Professional Services			7,796.00	7,796.00
Total Purchased Professional and Technical Services			\$7,796.00	\$7,796.00
Total 2160 Social Work Services			\$7,796.00	\$7,796.00

LEA : 103028203 Riverview SD

Printed 11/30/2022 3:14:55 PM

General Fund (10)

2200 Support Services – Instructional Staff	Elementary	Secondary	Federal	Total
100 Personnel Services – Salaries				
100 Personnel Services – Salaries	482,970.00	233,644.00	1,522.00	718,136.00
Total Personnel Services – Salaries	\$482,970.00	\$233,644.00	\$1,522.00	\$718,136.00
200 Personnel Services – Employee Benefits				
210 Group Insurance – Contracted Provider	125,225.00	43,826.00		169,051.00
220 Social Security Contributions	35,557.00	17,045.00		52,602.00
230 PSERS Retirement Contributions	168,643.00	79,975.00		248,618.00
240 Tuition Reimbursement	37,124.00	13,201.00		50,325.00
260 Workers' Compensation	4,748.00	5,223.00		9,971.00
Total Personnel Services – Employee Benefits	\$371,297.00	\$159,270.00		\$530,567.00
300 Purchased Professional and Technical Services				
330 Other Professional Services	18,081.00	1,937.00		20,018.00
Total Purchased Professional and Technical Services	\$18,081.00	\$1,937.00		\$20,018.00
500 Other Purchased Services				
580 Travel	28.00	42.00		70.00
Total Other Purchased Services	\$28.00	\$42.00		\$70.00
600 Supplies				
610 General Supplies	14,455.00	7,595.00	301,384.00	323,434.00
640 Books and Periodicals	73,921.00	150,613.00		224,534.00
Total Supplies	\$88,376.00	\$158,208.00	\$301,384.00	\$547,968.00
700 Property				
758 Capitalized Technology Software - Original	31,596.00	46,295.00		77,891.00
762 Capitalized Equipment - Replacement			345,792.00	345,792.00
766 Capitalized Technology Equipment – Replacement	2,348.00	1,721.00		4,069.00
Total Property	\$33,944.00	\$48,016.00	\$345,792.00	\$427,752.00
800 Other Objects				
810 Dues and Fees		1,600.00		1,600.00
Total Other Objects		\$1,600.00		\$1,600.00
Total 2200 Support Services – Instructional Staff	\$994,696.00	\$602,717.00	\$648,698.00	\$2,246,111.00

LEA : 103028203 Riverview SD

Printed 11/30/2022 3:14:55 PM

General Fund (10)

2220 Technology Support Services	Elementary	Secondary	Federal	Total
100 Personnel Services – Salaries				
100 Personnel Services – Salaries	79,856.00	79,078.00		158,934.00
Total Personnel Services – Salaries	\$79,856.00	\$79,078.00		\$158,934.00
200 Personnel Services – Employee Benefits				
210 Group Insurance – Contracted Provider	9,285.00	10,863.00		20,148.00
220 Social Security Contributions	5,920.00	5,864.00		11,784.00
230 PSERS Retirement Contributions	27,290.00	26,844.00		54,134.00
260 Workers' Compensation	482.00	724.00		1,206.00
Total Personnel Services – Employee Benefits	\$42,977.00	\$44,295.00		\$87,272.00
300 Purchased Professional and Technical Services				
330 Other Professional Services	700.00			700.00
Total Purchased Professional and Technical Services	\$700.00			\$700.00
500 Other Purchased Services				
580 Travel	28.00	42.00		70.00
Total Other Purchased Services	\$28.00	\$42.00		\$70.00
600 Supplies				
610 General Supplies	10,262.00		301,384.00	311,646.00
640 Books and Periodicals	55,200.00	82,799.00		137,999.00
Total Supplies	\$65,462.00	\$82,799.00	\$301,384.00	\$449,645.00
700 Property				
758 Capitalized Technology Software - Original	31,596.00	46,295.00		77,891.00
762 Capitalized Equipment - Replacement			345,792.00	345,792.00
766 Capitalized Technology Equipment – Replacement	2,348.00	1,721.00		4,069.00
Total Property	\$33,944.00	\$48,016.00	\$345,792.00	\$427,752.00
Total 2220 Technology Support Services	\$222,967.00	\$254,230.00	\$647,176.00	\$1,124,373.00

LEA : 103028203 Riverview SD

Printed 11/30/2022 3:14:55 PM

General Fund (10)

2250 School Library Services	<u>Elementary</u>	<u>Secondary</u>	<u>Federal</u>	<u>Total</u>
100 <u>Personnel Services – Salaries</u>				
100 Personnel Services – Salaries	60,859.00	31,352.00		92,211.00
Total Personnel Services – Salaries	\$60,859.00	\$31,352.00		\$92,211.00
200 <u>Personnel Services – Employee Benefits</u>				
210 Group Insurance – Contracted Provider	11,816.00	6,753.00		18,569.00
220 Social Security Contributions	4,513.00	2,324.00		6,837.00
230 PSERS Retirement Contributions	21,264.00	10,954.00		32,218.00
260 Workers' Compensation	1,379.00	2,912.00		4,291.00
Total Personnel Services – Employee Benefits	\$38,972.00	\$22,943.00		\$61,915.00
600 <u>Supplies</u>				
610 General Supplies	994.00	526.00		1,520.00
640 Books and Periodicals	9,830.00	13,699.00		23,529.00
Total Supplies	\$10,824.00	\$14,225.00		\$25,049.00
Total 2250 School Library Services	\$110,655.00	\$68,520.00		\$179,175.00

LEA : 103028203 Riverview SD

Printed 11/30/2022 3:14:55 PM

General Fund (10)

2260 Instruction and Curriculum Development Services	<u>Elementary</u>	<u>Secondary</u>	<u>Federal</u>	<u>Total</u>
100 <u>Personnel Services – Salaries</u>				
100 Personnel Services – Salaries	3,458.00	2,047.00		5,505.00
Total Personnel Services – Salaries	\$3,458.00	\$2,047.00		\$5,505.00
200 <u>Personnel Services – Employee Benefits</u>				
210 Group Insurance – Contracted Provider	8,365.00	21,389.00		29,754.00
220 Social Security Contributions	256.00	151.00		407.00
230 PSERS Retirement Contributions	1,208.00	714.00		1,922.00
260 Workers' Compensation	377.00	565.00		942.00
Total Personnel Services – Employee Benefits	\$10,206.00	\$22,819.00		\$33,025.00
300 <u>Purchased Professional and Technical Services</u>				
330 Other Professional Services	558.00	1,291.00		1,849.00
Total Purchased Professional and Technical Services	\$558.00	\$1,291.00		\$1,849.00
600 <u>Supplies</u>				
610 General Supplies	3,199.00	7,069.00		10,268.00
640 Books and Periodicals	8,891.00	54,115.00		63,006.00
Total Supplies	\$12,090.00	\$61,184.00		\$73,274.00
800 <u>Other Objects</u>				
810 Dues and Fees		1,600.00		1,600.00
Total Other Objects		\$1,600.00		\$1,600.00
Total 2260 Instruction and Curriculum Development Services	\$26,312.00	\$88,941.00		\$115,253.00

LEA : 103028203 Riverview SD

Printed 11/30/2022 3:14:55 PM

General Fund (10)

2270 Instructional Staff Professional Development Services	<u>Elementary</u>	<u>Secondary</u>	<u>Federal</u>	<u>Total</u>
200 <u>Personnel Services – Employee Benefits</u>				
240 Tuition Reimbursement	37,124.00	13,201.00		50,325.00
Total Personnel Services – Employee Benefits	\$37,124.00	\$13,201.00		\$50,325.00
Total 2270 Instructional Staff Professional Development Services	\$37,124.00	\$13,201.00		\$50,325.00

LEA : 103028203 Riverview SD

Printed 11/30/2022 3:14:55 PM

General Fund (10)

2290 Other Instructional Staff Services	<u>Elementary</u>	<u>Secondary</u>	<u>Federal</u>	<u>Total</u>
100 <u>Personnel Services – Salaries</u>				
100 Personnel Services – Salaries	338,797.00	121,167.00	1,522.00	461,486.00
Total Personnel Services – Salaries	\$338,797.00	\$121,167.00	\$1,522.00	\$461,486.00
200 <u>Personnel Services – Employee Benefits</u>				
210 Group Insurance – Contracted Provider	95,759.00	4,821.00		100,580.00
220 Social Security Contributions	24,868.00	8,706.00		33,574.00
230 PSERS Retirement Contributions	118,881.00	41,463.00		160,344.00
260 Workers' Compensation	2,510.00	1,022.00		3,532.00
Total Personnel Services – Employee Benefits	\$242,018.00	\$56,012.00		\$298,030.00
300 <u>Purchased Professional and Technical Services</u>				
330 Other Professional Services	16,823.00	646.00		17,469.00
Total Purchased Professional and Technical Services	\$16,823.00	\$646.00		\$17,469.00
Total 2290 Other Instructional Staff Services	\$597,638.00	\$177,825.00	\$1,522.00	\$776,985.00

LEA : 103028203 Riverview SD

Printed 11/30/2022 3:14:55 PM

General Fund (10)				
2300 Support Services – Administration	<u>Elementary</u>	<u>Secondary</u>	<u>Federal</u>	<u>Total</u>
100 <u>Personnel Services – Salaries</u>				
100 Personnel Services – Salaries	300,310.00	298,704.00		863,923.00
Total Personnel Services – Salaries	\$300,310.00	\$298,704.00		\$863,923.00
200 <u>Personnel Services – Employee Benefits</u>				
210 Group Insurance – Contracted Provider	73,455.00	80,890.00		214,498.00
220 Social Security Contributions	22,128.00	22,141.00		64,021.00
230 PSERS Retirement Contributions	104,142.00	96,441.00		293,142.00
260 Workers' Compensation	1,339.00	2,016.00		5,304.00
Total Personnel Services – Employee Benefits	\$201,064.00	\$201,488.00		\$576,965.00
300 <u>Purchased Professional and Technical Services</u>				
330 Other Professional Services	854.00	216.00		302,061.00
390 Other Purchased Professional and Technical Services				8,346.00
Total Purchased Professional and Technical Services	\$854.00	\$216.00		\$310,407.00
500 <u>Other Purchased Services</u>				
520 Insurance – General				16,744.00
549 Other Advertising/Public Relations				24,477.00
580 Travel		1,211.00		1,624.00
Total Other Purchased Services		\$1,211.00		\$42,845.00
600 <u>Supplies</u>				
610 General Supplies	2,746.00	1,545.00		11,736.00
650 Supplies & Fees – Technology Related	2,989.00	1,283.00		4,272.00
Total Supplies	\$5,735.00	\$2,828.00		\$16,008.00
800 <u>Other Objects</u>				
810 Dues and Fees	595.00	2,017.00		26,367.00
Total Other Objects	\$595.00	\$2,017.00		\$26,367.00
Total 2300 Support Services – Administration	\$508,558.00	\$506,464.00		\$1,836,515.00

LEA : 103028203 Riverview SD

Printed 11/30/2022 3:14:55 PM

General Fund (10)

2310 Board Services

Elementary Secondary Federal Total

300 <u>Purchased Professional and Technical Services</u>				
330 Other Professional Services				14,877.00
Total Purchased Professional and Technical Services				\$14,877.00
500 <u>Other Purchased Services</u>				
520 Insurance – General				11,840.00
549 Other Advertising/Public Relations				6,831.00
Total Other Purchased Services				\$18,671.00
600 <u>Supplies</u>				
610 General Supplies				126.00
Total Supplies				\$126.00
800 <u>Other Objects</u>				
810 Dues and Fees				18,650.00
Total Other Objects				\$18,650.00
Total 2310 Board Services				\$52,324.00

LEA : 103028203 Riverview SD

Printed 11/30/2022 3:14:55 PM

General Fund (10)

2330 Tax Assessment and Collection Services	<u>Elementary</u>	<u>Secondary</u>	<u>Federal</u>	<u>Total</u>
300 <u>Purchased Professional and Technical Services</u>				
330 Other Professional Services				210,371.00
390 Other Purchased Professional and Technical Services				8,346.00
Total Purchased Professional and Technical Services				\$218,717.00
500 <u>Other Purchased Services</u>				
520 Insurance – General				4,904.00
Total Other Purchased Services				\$4,904.00
Total 2330 Tax Assessment and Collection Services				\$223,621.00

LEA : 103028203 Riverview SD

Printed 11/30/2022 3:14:55 PM

General Fund (10)

2350 Legal and Accounting Services	<u>Elementary</u>	<u>Secondary</u>	<u>Federal</u>	<u>Total</u>
300 <u>Purchased Professional and Technical Services</u>				
330 Other Professional Services				73,442.00
Total Purchased Professional and Technical Services				\$73,442.00
Total 2350 Legal and Accounting Services				\$73,442.00

LEA : 103028203 Riverview SD

Printed 11/30/2022 3:14:55 PM

General Fund (10)				
2360 Office of the Superintendent / Executive Director Services	<u>Elementary</u>	<u>Secondary</u>	<u>Federal</u>	<u>Total</u>
100 <u>Personnel Services – Salaries</u>				
100 Personnel Services – Salaries				264,909.00
Total Personnel Services – Salaries				\$264,909.00
200 <u>Personnel Services – Employee Benefits</u>				
210 Group Insurance – Contracted Provider				60,153.00
220 Social Security Contributions				19,752.00
230 PSERS Retirement Contributions				92,559.00
260 Workers' Compensation				1,949.00
Total Personnel Services – Employee Benefits				\$174,413.00
300 <u>Purchased Professional and Technical Services</u>				
330 Other Professional Services				2,301.00
Total Purchased Professional and Technical Services				\$2,301.00
500 <u>Other Purchased Services</u>				
549 Other Advertising/Public Relations				17,646.00
580 Travel				413.00
Total Other Purchased Services				\$18,059.00
600 <u>Supplies</u>				
610 General Supplies				5,565.00
Total Supplies				\$5,565.00
800 <u>Other Objects</u>				
810 Dues and Fees				5,105.00
Total Other Objects				\$5,105.00
Total 2360 Office of the Superintendent / Executive Director Services				\$470,352.00

LEA : 103028203 Riverview SD

Printed 11/30/2022 3:14:55 PM

General Fund (10)

2380 Office of the Principal Services	Elementary	Secondary	Federal	Total
100 <u>Personnel Services – Salaries</u>				
100 Personnel Services – Salaries	300,310.00	298,704.00		599,014.00
Total Personnel Services – Salaries	\$300,310.00	\$298,704.00		\$599,014.00
200 <u>Personnel Services – Employee Benefits</u>				
210 Group Insurance – Contracted Provider	73,455.00	80,890.00		154,345.00
220 Social Security Contributions	22,128.00	22,141.00		44,269.00
230 PSERS Retirement Contributions	104,142.00	96,441.00		200,583.00
260 Workers' Compensation	1,339.00	2,016.00		3,355.00
Total Personnel Services – Employee Benefits	\$201,064.00	\$201,488.00		\$402,552.00
300 <u>Purchased Professional and Technical Services</u>				
330 Other Professional Services	854.00	216.00		1,070.00
Total Purchased Professional and Technical Services	\$854.00	\$216.00		\$1,070.00
500 <u>Other Purchased Services</u>				
580 Travel		1,211.00		1,211.00
Total Other Purchased Services		\$1,211.00		\$1,211.00
600 <u>Supplies</u>				
610 General Supplies	2,746.00	1,545.00		4,291.00
650 Supplies & Fees – Technology Related	2,989.00	1,283.00		4,272.00
Total Supplies	\$5,735.00	\$2,828.00		\$8,563.00
800 <u>Other Objects</u>				
810 Dues and Fees	595.00	2,017.00		2,612.00
Total Other Objects	\$595.00	\$2,017.00		\$2,612.00
Total 2380 Office of the Principal Services	\$508,558.00	\$506,464.00		\$1,015,022.00

LEA : 103028203 Riverview SD

Printed 11/30/2022 3:14:55 PM

General Fund (10)				
2390 Other Administration Services	<u>Elementary</u>	<u>Secondary</u>	<u>Federal</u>	<u>Total</u>
600 <u>Supplies</u>				
610 General Supplies				1,754.00
Total Supplies				\$1,754.00
Total 2390 Other Administration Services				\$1,754.00

LEA : 103028203 Riverview SD

Printed 11/30/2022 3:14:55 PM

General Fund (10)				
2400 Support Services – Pupil Health	<u>Elementary</u>	<u>Secondary</u>	<u>Federal</u>	<u>Total</u>
100 <u>Personnel Services – Salaries</u>				
100 Personnel Services – Salaries				77,395.00
Total Personnel Services – Salaries				\$77,395.00
200 <u>Personnel Services – Employee Benefits</u>				
210 Group Insurance – Contracted Provider				21,478.00
220 Social Security Contributions				5,718.00
230 PSERS Retirement Contributions				27,042.00
260 Workers' Compensation				509.00
Total Personnel Services – Employee Benefits				\$54,747.00
300 <u>Purchased Professional and Technical Services</u>				
330 Other Professional Services				18,816.00
Total Purchased Professional and Technical Services				\$18,816.00
500 <u>Other Purchased Services</u>				
580 Travel				59.00
Total Other Purchased Services				\$59.00
600 <u>Supplies</u>				
610 General Supplies				4,483.00
Total Supplies				\$4,483.00
800 <u>Other Objects</u>				
810 Dues and Fees				244.00
Total Other Objects				\$244.00
Total 2400 Support Services – Pupil Health				\$155,744.00

LEA : 103028203 Riverview SD

Printed 11/30/2022 3:14:55 PM

General Fund (10)

2420 Medical Services

<u>Elementary</u>	<u>Secondary</u>	<u>Federal</u>	<u>Total</u>
-------------------	------------------	----------------	--------------

300 Purchased Professional and Technical Services

330 Other Professional Services			13,900.00
---------------------------------	--	--	-----------

Total Purchased Professional and Technical Services			\$13,900.00
--	--	--	--------------------

Total 2420 Medical Services			\$13,900.00
------------------------------------	--	--	--------------------

LEA : 103028203 Riverview SD

Printed 11/30/2022 3:14:55 PM

General Fund (10)				
2440 Nursing Services	<u>Elementary</u>	<u>Secondary</u>	<u>Federal</u>	<u>Total</u>
100 <u>Personnel Services – Salaries</u>				
100 Personnel Services – Salaries				77,395.00
Total Personnel Services – Salaries				\$77,395.00
200 <u>Personnel Services – Employee Benefits</u>				
210 Group Insurance – Contracted Provider				21,478.00
220 Social Security Contributions				5,718.00
230 PSERS Retirement Contributions				27,042.00
260 Workers' Compensation				509.00
Total Personnel Services – Employee Benefits				\$54,747.00
300 <u>Purchased Professional and Technical Services</u>				
330 Other Professional Services				4,916.00
Total Purchased Professional and Technical Services				\$4,916.00
500 <u>Other Purchased Services</u>				
580 Travel				59.00
Total Other Purchased Services				\$59.00
600 <u>Supplies</u>				
610 General Supplies				4,483.00
Total Supplies				\$4,483.00
800 <u>Other Objects</u>				
810 Dues and Fees				244.00
Total Other Objects				\$244.00
Total 2440 Nursing Services				\$141,844.00

LEA : 103028203 Riverview SD

Printed 11/30/2022 3:14:55 PM

General Fund (10)				
2500 Support Services – Business	<u>Elementary</u>	<u>Secondary</u>	<u>Federal</u>	<u>Total</u>
100 <u>Personnel Services – Salaries</u>				
100 Personnel Services – Salaries				223,558.00
Total Personnel Services – Salaries				\$223,558.00
200 <u>Personnel Services – Employee Benefits</u>				
210 Group Insurance – Contracted Provider				51,548.00
220 Social Security Contributions				16,669.00
230 PSERS Retirement Contributions				77,887.00
260 Workers' Compensation				1,737.00
299 All Other Employee Benefits				4,000.00
Total Personnel Services – Employee Benefits				\$151,841.00
300 <u>Purchased Professional and Technical Services</u>				
330 Other Professional Services				42,660.00
Total Purchased Professional and Technical Services				\$42,660.00
500 <u>Other Purchased Services</u>				
530 Communications				4,310.00
580 Travel				848.00
Total Other Purchased Services				\$5,158.00
600 <u>Supplies</u>				
610 General Supplies				10,352.00
Total Supplies				\$10,352.00
800 <u>Other Objects</u>				
810 Dues and Fees				23,669.00
Total Other Objects				\$23,669.00
Total 2500 Support Services – Business				\$457,238.00

LEA : 103028203 Riverview SD

Printed 11/30/2022 3:14:55 PM

General Fund (10)

2510 Fiscal Services

	<u>Elementary</u>	<u>Secondary</u>	<u>Federal</u>	<u>Total</u>
100 <u>Personnel Services – Salaries</u>				
100 Personnel Services – Salaries				223,558.00
Total Personnel Services – Salaries				\$223,558.00
200 <u>Personnel Services – Employee Benefits</u>				
210 Group Insurance – Contracted Provider				51,548.00
220 Social Security Contributions				16,669.00
230 PSERS Retirement Contributions				77,887.00
260 Workers' Compensation				1,737.00
299 All Other Employee Benefits				4,000.00
Total Personnel Services – Employee Benefits				\$151,841.00
300 <u>Purchased Professional and Technical Services</u>				
330 Other Professional Services				42,660.00
Total Purchased Professional and Technical Services				\$42,660.00
500 <u>Other Purchased Services</u>				
530 Communications				4,310.00
580 Travel				848.00
Total Other Purchased Services				\$5,158.00
600 <u>Supplies</u>				
610 General Supplies				10,352.00
Total Supplies				\$10,352.00
800 <u>Other Objects</u>				
810 Dues and Fees				23,669.00
Total Other Objects				\$23,669.00
Total 2510 Fiscal Services				\$457,238.00

LEA : 103028203 Riverview SD

Printed 11/30/2022 3:14:55 PM

General Fund (10)				
2511 Supervision of Fiscal Services - Head of Component	<u>Elementary</u>	<u>Secondary</u>	<u>Federal</u>	<u>Total</u>
100 <u>Personnel Services – Salaries</u>				
100 Personnel Services – Salaries				223,558.00
Total Personnel Services – Salaries				\$223,558.00
200 <u>Personnel Services – Employee Benefits</u>				
210 Group Insurance – Contracted Provider				51,548.00
220 Social Security Contributions				16,669.00
230 PSERS Retirement Contributions				77,887.00
260 Workers' Compensation				1,737.00
299 All Other Employee Benefits				4,000.00
Total Personnel Services – Employee Benefits				\$151,841.00
300 <u>Purchased Professional and Technical Services</u>				
330 Other Professional Services				42,660.00
Total Purchased Professional and Technical Services				\$42,660.00
500 <u>Other Purchased Services</u>				
530 Communications				4,310.00
580 Travel				848.00
Total Other Purchased Services				\$5,158.00
600 <u>Supplies</u>				
610 General Supplies				10,352.00
Total Supplies				\$10,352.00
800 <u>Other Objects</u>				
810 Dues and Fees				23,669.00
Total Other Objects				\$23,669.00
Total 2511 Supervision of Fiscal Services - Head of Component				\$457,238.00

LEA : 103028203 Riverview SD

Printed 11/30/2022 3:14:55 PM

General Fund (10)

2600 Operation and Maintenance of Plant Services	<u>Elementary</u>	<u>Secondary</u>	<u>Federal</u>	<u>Total</u>
100 <u>Personnel Services – Salaries</u>				
100 Personnel Services – Salaries				609,800.00
Total Personnel Services – Salaries				\$609,800.00
200 <u>Personnel Services – Employee Benefits</u>				
210 Group Insurance – Contracted Provider				146,182.00
220 Social Security Contributions				45,252.00
230 PSERS Retirement Contributions				210,902.00
260 Workers' Compensation				4,212.00
299 All Other Employee Benefits				12,314.00
Total Personnel Services – Employee Benefits				\$418,862.00
300 <u>Purchased Professional and Technical Services</u>				
330 Other Professional Services				56,665.00
Total Purchased Professional and Technical Services				\$56,665.00
400 <u>Purchased Property Services</u>				
410 Cleaning Services				72,799.00
420 Utility Services				23,136.00
430 Repairs and Maintenance Services				125,966.00
460 Extermination Services				1,555.00
Total Purchased Property Services				\$223,456.00
500 <u>Other Purchased Services</u>				
523 General Property and Liability Insurance				59,936.00
530 Communications				42,539.00
580 Travel				583.00
Total Other Purchased Services				\$103,058.00
600 <u>Supplies</u>				
610 General Supplies	50,786.00	5,835.00	71,510.00	128,131.00
620 Energy				304,529.00
Total Supplies	\$50,786.00	\$5,835.00	\$71,510.00	\$432,660.00
700 <u>Property</u>				
758 Capitalized Technology Software - Original				5,473.00
Total Property				\$5,473.00
800 <u>Other Objects</u>				
810 Dues and Fees				435.00
Total Other Objects				\$435.00
Total 2600 Operation and Maintenance of Plant Services	\$50,786.00	\$5,835.00	\$71,510.00	\$1,850,409.00

LEA : 103028203 Riverview SD

Printed 11/30/2022 3:14:55 PM

General Fund (10)				
2610 Supervision of Operation and Maintenance of Plant Services	<u>Elementary</u>	<u>Secondary</u>	<u>Federal</u>	<u>Total</u>
100 <u>Personnel Services – Salaries</u>				
100 Personnel Services – Salaries				609,800.00
Total Personnel Services – Salaries				\$609,800.00
200 <u>Personnel Services – Employee Benefits</u>				
210 Group Insurance – Contracted Provider				146,182.00
220 Social Security Contributions				45,252.00
230 PSERS Retirement Contributions				210,902.00
260 Workers' Compensation				4,212.00
299 All Other Employee Benefits				12,314.00
Total Personnel Services – Employee Benefits				\$418,862.00
300 <u>Purchased Professional and Technical Services</u>				
330 Other Professional Services				56,665.00
Total Purchased Professional and Technical Services				\$56,665.00
400 <u>Purchased Property Services</u>				
410 Cleaning Services				72,799.00
420 Utility Services				23,136.00
430 Repairs and Maintenance Services				125,966.00
460 Extermination Services				1,555.00
Total Purchased Property Services				\$223,456.00
500 <u>Other Purchased Services</u>				
523 General Property and Liability Insurance				59,936.00
530 Communications				42,539.00
580 Travel				583.00
Total Other Purchased Services				\$103,058.00
600 <u>Supplies</u>				
610 General Supplies	50,786.00	5,835.00	71,510.00	128,131.00
620 Energy				304,529.00
Total Supplies	\$50,786.00	\$5,835.00	\$71,510.00	\$432,660.00
700 <u>Property</u>				
758 Capitalized Technology Software - Original				1,831.00
Total Property				\$1,831.00
800 <u>Other Objects</u>				
810 Dues and Fees				435.00
Total Other Objects				\$435.00
Total 2610 Supervision of Operation and Maintenance of Plant Services	\$50,786.00	\$5,835.00	\$71,510.00	\$1,846,767.00

LEA : 103028203 Riverview SD

Printed 11/30/2022 3:14:55 PM

General Fund (10)				
2611 Supervision of Operation and Maintenance of Plant Services – Head of Component	<u>Elementary</u>	<u>Secondary</u>	<u>Federal</u>	<u>Total</u>
100 <u>Personnel Services – Salaries</u>				
100 Personnel Services – Salaries				609,800.00
Total Personnel Services – Salaries				\$609,800.00
200 <u>Personnel Services – Employee Benefits</u>				
210 Group Insurance – Contracted Provider				146,182.00
220 Social Security Contributions				45,252.00
230 PSERS Retirement Contributions				210,902.00
260 Workers' Compensation				4,212.00
299 All Other Employee Benefits				12,314.00
Total Personnel Services – Employee Benefits				\$418,862.00
300 <u>Purchased Professional and Technical Services</u>				
330 Other Professional Services				56,665.00
Total Purchased Professional and Technical Services				\$56,665.00
400 <u>Purchased Property Services</u>				
410 Cleaning Services				72,799.00
420 Utility Services				23,136.00
430 Repairs and Maintenance Services				125,966.00
460 Extermination Services				1,555.00
Total Purchased Property Services				\$223,456.00
500 <u>Other Purchased Services</u>				
523 General Property and Liability Insurance				59,936.00
530 Communications				42,539.00
580 Travel				583.00
Total Other Purchased Services				\$103,058.00
600 <u>Supplies</u>				
610 General Supplies	50,786.00	5,835.00	71,510.00	128,131.00
620 Energy				304,529.00
Total Supplies	\$50,786.00	\$5,835.00	\$71,510.00	\$432,660.00
700 <u>Property</u>				
758 Capitalized Technology Software - Original				1,831.00
Total Property				\$1,831.00
800 <u>Other Objects</u>				
810 Dues and Fees				435.00
Total Other Objects				\$435.00
Total 2611 Supervision of Operation and Maintenance of Plant Services – Head of Component	\$50,786.00	\$5,835.00	\$71,510.00	\$1,846,767.00

LEA : 103028203 Riverview SD

Printed 11/30/2022 3:14:55 PM

General Fund (10)				
2660 Safety and Security Services	<u>Elementary</u>	<u>Secondary</u>	<u>Federal</u>	<u>Total</u>
700 <u>Property</u>				
758 Capitalized Technology Software - Original				3,642.00
Total Property				\$3,642.00
Total 2660 Safety and Security Services				\$3,642.00

LEA : 103028203 Riverview SD

Printed 11/30/2022 3:14:55 PM

General Fund (10)

2700 Student Transportation Services	<u>Elementary</u>	<u>Secondary</u>	<u>Federal</u>	<u>Total</u>
500 <u>Other Purchased Services</u>				
513 Contracted Carriers				863,183.00
Total Other Purchased Services				\$863,183.00
Total 2700 Student Transportation Services				\$863,183.00

LEA : 103028203 Riverview SD

Printed 11/30/2022 3:14:55 PM

General Fund (10)

2710 Supervision of Student Transportation Services	<u>Elementary</u>	<u>Secondary</u>	<u>Federal</u>	<u>Total</u>
500 <u>Other Purchased Services</u>				
513 Contracted Carriers				1,574.00
Total Other Purchased Services				\$1,574.00
Total 2710 Supervision of Student Transportation Services				\$1,574.00

LEA : 103028203 Riverview SD

Printed 11/30/2022 3:14:55 PM

General Fund (10)				
2711 Supervision of Student Transportation Services – Head of Component	<u>Elementary</u>	<u>Secondary</u>	<u>Federal</u>	<u>Total</u>
500 <u>Other Purchased Services</u>				
513 Contracted Carriers				1,574.00
Total Other Purchased Services				\$1,574.00
Total 2711 Supervision of Student Transportation Services – Head of Component				\$1,574.00

LEA : 103028203 Riverview SD

Printed 11/30/2022 3:14:55 PM

General Fund (10)				
2730 Monitoring Services	<u>Elementary</u>	<u>Secondary</u>	<u>Federal</u>	<u>Total</u>
500 <u>Other Purchased Services</u>				
513 Contracted Carriers				56,958.00
Total Other Purchased Services				\$56,958.00
Total 2730 Monitoring Services				\$56,958.00

LEA : 103028203 Riverview SD

Printed 11/30/2022 3:14:55 PM

General Fund (10)				
2750 Nonpublic Transportation	<u>Elementary</u>	<u>Secondary</u>	<u>Federal</u>	<u>Total</u>
500 <u>Other Purchased Services</u>				
513 Contracted Carriers				804,651.00
Total Other Purchased Services				\$804,651.00
Total 2750 Nonpublic Transportation				\$804,651.00

LEA : 103028203 Riverview SD

Printed 11/30/2022 3:14:55 PM

General Fund (10)

2900 Other Support Services	<u>Elementary</u>	<u>Secondary</u>	<u>Federal</u>	<u>Total</u>
500 <u>Other Purchased Services</u>				
595 IU Payments By Withholding				19,061.00
Total Other Purchased Services				\$19,061.00
Total 2900 Other Support Services				\$19,061.00

LEA : 103028203 Riverview SD

Printed 11/30/2022 3:14:55 PM

General Fund (10)

2910 Support Services Not Listed Elsewhere In the 2000 Series

Elementary Secondary Federal Total

500 Other Purchased Services

595 IU Payments By Withholding 19,061.00

Total Other Purchased Services \$19,061.00

Total 2910 Support Services Not Listed Elsewhere In the 2000 Series \$19,061.00

LEA : 103028203 Riverview SD

Printed 11/30/2022 3:15:23 PM

General Fund (10)	
3000 Operation of Non-Instructional Services	<u>Total</u>
100 <u>Personnel Services – Salaries</u>	
100 Personnel Services – Salaries	311,812.00
Total Personnel Services – Salaries	\$311,812.00
200 <u>Personnel Services – Employee Benefits</u>	
220 Social Security Contributions	23,747.00
230 PSERS Retirement Contributions	45,591.00
260 Workers' Compensation	2,863.00
Total Personnel Services – Employee Benefits	\$72,201.00
300 <u>Purchased Professional and Technical Services</u>	
330 Other Professional Services	22,610.00
350 Security / Safety Services	52,767.00
Total Purchased Professional and Technical Services	\$75,377.00
400 <u>Purchased Property Services</u>	
410 Cleaning Services	62,510.00
430 Repairs and Maintenance Services	6,887.00
440 Rentals	3,582.00
Total Purchased Property Services	\$72,979.00
500 <u>Other Purchased Services</u>	
510 Student Transportation Services	77,339.00
520 Insurance – General	9,100.00
580 Travel	3,816.00
Total Other Purchased Services	\$90,255.00
600 <u>Supplies</u>	
610 General Supplies	25,215.00
640 Books and Periodicals	1,566.00
Total Supplies	\$26,781.00
700 <u>Property</u>	
762 Capitalized Equipment - Replacement	16,244.00
790 Other Property	28,542.00
Total Property	\$44,786.00
800 <u>Other Objects</u>	
810 Dues and Fees	13,759.00
890 Miscellaneous Expenditures	27,500.00
Total Other Objects	\$41,259.00
Total 3000 Operation of Non-Instructional Services	\$735,450.00

LEA : 103028203 Riverview SD

Printed 11/30/2022 3:15:23 PM

General Fund (10)

3200 Student Activities

	<u>Elementary</u>	<u>Secondary</u>	<u>Federal</u>	<u>Total</u>
100 <u>Personnel Services – Salaries</u>				
100 Personnel Services – Salaries				305,344.00
Total Personnel Services – Salaries				\$305,344.00
200 <u>Personnel Services – Employee Benefits</u>				
220 Social Security Contributions				23,252.00
230 PSERS Retirement Contributions				43,331.00
260 Workers’ Compensation				2,825.00
Total Personnel Services – Employee Benefits				\$69,408.00
300 <u>Purchased Professional and Technical Services</u>				
330 Other Professional Services				22,610.00
350 Security / Safety Services				5,866.00
Total Purchased Professional and Technical Services				\$28,476.00
400 <u>Purchased Property Services</u>				
410 Cleaning Services				62,510.00
430 Repairs and Maintenance Services				6,887.00
440 Rentals				3,582.00
Total Purchased Property Services				\$72,979.00
500 <u>Other Purchased Services</u>				
510 Student Transportation Services				77,339.00
520 Insurance – General				9,100.00
580 Travel				3,816.00
Total Other Purchased Services				\$90,255.00
600 <u>Supplies</u>				
610 General Supplies				25,215.00
640 Books and Periodicals				1,566.00
Total Supplies				\$26,781.00
700 <u>Property</u>				
762 Capitalized Equipment - Replacement				16,244.00
790 Other Property				28,542.00
Total Property				\$44,786.00
800 <u>Other Objects</u>				
810 Dues and Fees				13,759.00
890 Miscellaneous Expenditures				25,000.00
Total Other Objects				\$38,759.00
Total 3200 Student Activities				\$676,788.00

LEA : 103028203 Riverview SD

Printed 11/30/2022 3:15:23 PM

General Fund (10)

3300 Community Services	<u>Elementary</u>	<u>Secondary</u>	<u>Federal</u>	<u>Total</u>
100 <u>Personnel Services – Salaries</u>				
100 Personnel Services – Salaries				6,468.00
Total Personnel Services – Salaries				\$6,468.00
200 <u>Personnel Services – Employee Benefits</u>				
220 Social Security Contributions				495.00
230 PSERS Retirement Contributions				2,260.00
260 Workers’ Compensation				38.00
Total Personnel Services – Employee Benefits				\$2,793.00
300 <u>Purchased Professional and Technical Services</u>				
350 Security / Safety Services				46,901.00
Total Purchased Professional and Technical Services				\$46,901.00
800 <u>Other Objects</u>				
890 Miscellaneous Expenditures				2,500.00
Total Other Objects				\$2,500.00
Total 3300 Community Services				\$58,662.00

LEA : 103028203 Riverview SD

Printed 11/30/2022 3:15:34 PM

General Fund (10)	
4000 Facilities Acquisition, Construction and Improvement Services	<u>Total</u>
300 <u>Purchased Professional and Technical Services</u>	
330 Other Professional Services	10,000.00
Total Purchased Professional and Technical Services	\$10,000.00
Total 4000 Facilities Acquisition, Construction and Improvement Services	\$10,000.00

LEA : 103028203 Riverview SD

Printed 11/30/2022 3:15:34 PM

General Fund (10)

4600 Existing Building Improvement Services	<u>Elementary</u>	<u>Secondary</u>	<u>Federal</u>	<u>Total</u>
300 <u>Purchased Professional and Technical Services</u>				
330 Other Professional Services				10,000.00
Total Purchased Professional and Technical Services				\$10,000.00
Total 4600 Existing Building Improvement Services				\$10,000.00

LEA : 103028203 Riverview SD

Printed 11/30/2022 3:16:20 PM

General Fund (10)

5000 Other Expenditures and Financing Uses		<u>Total</u>
800 <u>Other Objects</u>		
830 Interest		668,362.00
880 Refunds of Prior Years' Receipts		128,980.00
Total Other Objects		\$797,342.00
900 <u>Other Uses of Funds</u>		
910 Redemption of Principal		938,183.00
932 Capital Reserve Fund Transfers Applicable To Fund 32		1,400,000.00
Total Other Uses of Funds		\$2,338,183.00
Total 5000 Other Expenditures and Financing Uses		\$3,135,525.00

LEA : 103028203 Riverview SD

Printed 11/30/2022 3:16:20 PM

General Fund (10)

5100 Debt Service / Other Expenditures and Financing Uses	<u>Elementary</u>	<u>Secondary</u>	<u>Federal</u>	<u>Total</u>
800 <u>Other Objects</u>				
830 Interest				668,362.00
880 Refunds of Prior Years' Receipts				128,980.00
Total Other Objects				\$797,342.00
900 <u>Other Uses of Funds</u>				
910 Redemption of Principal				938,183.00
Total Other Uses of Funds				\$938,183.00
Total 5100 Debt Service / Other Expenditures and Financing Uses				\$1,735,525.00

LEA : 103028203 Riverview SD

Printed 11/30/2022 3:16:20 PM

General Fund (10)				
5110 Debt Service	<u>Elementary</u>	<u>Secondary</u>	<u>Federal</u>	<u>Total</u>
800 <u>Other Objects</u>				
830 Interest				664,366.00
Total Other Objects				\$664,366.00
900 <u>Other Uses of Funds</u>				
910 Redemption of Principal				900,000.00
Total Other Uses of Funds				\$900,000.00
Total 5110 Debt Service				\$1,564,366.00

LEA : 103028203 Riverview SD

Printed 11/30/2022 3:16:20 PM

General Fund (10)

5130 Refund of Prior Year Revenues / Receipts	<u>Elementary</u>	<u>Secondary</u>	<u>Federal</u>	<u>Total</u>
800 <u>Other Objects</u>				
880 Refunds of Prior Years' Receipts				128,980.00
Total Other Objects				\$128,980.00
Total 5130 Refund of Prior Year Revenues / Receipts				\$128,980.00

LEA : 103028203 Riverview SD

Printed 11/30/2022 3:16:20 PM

General Fund (10)				
5140 Leases	<u>Elementary</u>	<u>Secondary</u>	<u>Federal</u>	<u>Total</u>
800 <u>Other Objects</u>				
830 Interest				3,996.00
Total Other Objects				\$3,996.00
900 <u>Other Uses of Funds</u>				
910 Redemption of Principal				38,183.00
Total Other Uses of Funds				\$38,183.00
Total 5140 Leases				\$42,179.00

LEA : 103028203 Riverview SD

Printed 11/30/2022 3:16:20 PM

General Fund (10)

5200 Interfund Transfers – Out	<u>Elementary</u>	<u>Secondary</u>	<u>Federal</u>	<u>Total</u>
900 <u>Other Uses of Funds</u>				
932 Capital Reserve Fund Transfers Applicable To Fund 32				1,400,000.00
Total Other Uses of Funds				\$1,400,000.00
Total 5200 Interfund Transfers – Out				\$1,400,000.00

LEA : 103028203 Riverview SD

Printed 11/30/2022 3:16:20 PM

General Fund (10)

5230 Capital Projects Fund Transfers	<u>Elementary</u>	<u>Secondary</u>	<u>Federal</u>	<u>Total</u>
900 <u>Other Uses of Funds</u>				
932 Capital Reserve Fund Transfers Applicable To Fund 32				1,400,000.00
Total Other Uses of Funds				\$1,400,000.00
Total 5230 Capital Projects Fund Transfers				\$1,400,000.00

LEA : 103028203 Riverview SD

Printed 11/30/2022 3:15:01 PM

Capital Reserve Fund - § 1431 (32)

2000 Support Services		<u>Total</u>
800 <u>Other Objects</u>		
810 Dues and Fees		744.00
Total Other Objects		\$744.00
Total 2000 Support Services		\$744.00

LEA : 103028203 Riverview SD

Printed 11/30/2022 3:15:01 PM

Capital Reserve Fund - § 1431 (32)				
2500 Support Services – Business	<u>Elementary</u>	<u>Secondary</u>	<u>Federal</u>	<u>Total</u>
800 <u>Other Objects</u>				
810 Dues and Fees				744.00
Total Other Objects				\$744.00
Total 2500 Support Services – Business				\$744.00

LEA : 103028203 Riverview SD

Printed 11/30/2022 3:15:01 PM

Capital Reserve Fund - § 1431 (32)

2510 Fiscal Services	<u>Elementary</u>	<u>Secondary</u>	<u>Federal</u>	<u>Total</u>
800 <u>Other Objects</u>				
810 Dues and Fees				744.00
Total Other Objects				\$744.00
Total 2510 Fiscal Services				\$744.00

LEA : 103028203 Riverview SD

Printed 11/30/2022 3:15:01 PM

Capital Reserve Fund - § 1431 (32)

2511 Supervision of Fiscal Services - Head of Component

	<u>Elementary</u>	<u>Secondary</u>	<u>Federal</u>	<u>Total</u>
800 <u>Other Objects</u>				
810 Dues and Fees				744.00
Total Other Objects				\$744.00
Total 2511 Supervision of Fiscal Services - Head of Component				\$744.00

LEA : 103028203 Riverview SD

Printed 11/30/2022 3:15:46 PM

Capital Reserve Fund - § 1431 (32)

4000 Facilities Acquisition, Construction and Improvement Services

Total

700 <u>Property</u>	
762 Capitalized Equipment - Replacement	5,494.00
Total Property	\$5,494.00
Total 4000 Facilities Acquisition, Construction and Improvement Services	\$5,494.00

LEA : 103028203 Riverview SD

Printed 11/30/2022 3:15:46 PM

Capital Reserve Fund - § 1431 (32)

4600 Existing Building Improvement Services	<u>Elementary</u>	<u>Secondary</u>	<u>Federal</u>	<u>Total</u>
700 <u>Property</u>				
762 Capitalized Equipment - Replacement				5,494.00
Total Property				\$5,494.00
Total 4600 Existing Building Improvement Services				\$5,494.00

LEA : 103028203 Riverview SD

Printed 11/30/2022 3:15:59 PM

Other Capital Projects Fund (39)

4000 Facilities Acquisition, Construction and Improvement Services

Total

300 Purchased Professional and Technical Services

330 Other Professional Services	2,869,076.00
---------------------------------	--------------

Total Purchased Professional and Technical Services	\$2,869,076.00
---	----------------

Total 4000 Facilities Acquisition, Construction and Improvement Services	\$2,869,076.00
--	----------------

LEA : 103028203 Riverview SD

Printed 11/30/2022 3:15:59 PM

Other Capital Projects Fund (39)

4600 Existing Building Improvement Services

<u>Elementary</u>	<u>Secondary</u>	<u>Federal</u>	<u>Total</u>
-------------------	------------------	----------------	--------------

300 Purchased Professional and Technical Services

330 Other Professional Services			2,869,076.00
---------------------------------	--	--	--------------

Total Purchased Professional and Technical Services			\$2,869,076.00
--	--	--	-----------------------

Total 4600 Existing Building Improvement Services			\$2,869,076.00
--	--	--	-----------------------

LEA : 103028203 Riverview SD

Printed 11/30/2022 3:16:39 PM

	<u>General Fund(10)</u>	<u>Student Sponsored Activity Fund(21)</u>	<u>Public Purpose Trust(27)</u>	<u>Other Compt Approved (28)</u>	<u>Athletic / Activity(29)</u>
1000 <u>Instruction</u>					
1100 Regular Programs - Elementary / Secondary	10,868,899.00				
1200 Special Programs - Elementary / Secondary	2,752,517.00				
1300 Vocational Education	489,377.00				
1400 Other Instructional Programs - Elementary / Secondary	127,640.00				
Total Instruction	\$14,238,433.00				
2000 <u>Support Services</u>					
2100 Support Services - Students	548,460.00				
2200 Support Services - Instructional Staff	2,246,111.00				
2300 Support Services - Administration	1,836,515.00				
2400 Support Services - Pupil Health	155,744.00				
2500 Support Services - Business	457,238.00				
2600 Operation and Maintenance of Plant Services	1,850,409.00				
2700 Student Transportation Services	863,183.00				
2900 Other Support Services	19,061.00				
Total Support Services	\$7,976,721.00				
3000 <u>Operation of Non-Instructional Services</u>					
3200 Student Activities	676,788.00				
3300 Community Services	58,662.00				
Total Operation of Non-Instructional Services	\$735,450.00				
4000 <u>Facilities Acquisition, Construction and Improvement Services</u>					
4600 Existing Building Improvement Services	10,000.00				
Total Facilities Acquisition, Construction and Improvement Services	\$10,000.00				
5000 <u>Other Expenditures and Financing Uses</u>					
5100 Debt Service / Other Expenditures and Financing Uses	1,735,525.00				
5200 Interfund Transfers - Out	1,400,000.00				
Total Other Expenditures and Financing Uses	\$3,135,525.00				
TOTAL ACTUAL EXPENDITURES & OTHER FINANCING USES	\$26,096,129.00				

LEA : 103028203 Riverview SD

Printed 11/30/2022 3:16:39 PM

	<u>Capital Reserve (690.1850)(31)</u>	<u>Capital Reserve (1431)(32)</u>	<u>Other Capital Projects Fund(39)</u>	<u>Debt Service(40)</u>	<u>Permanent(90)</u>
1000 <u>Instruction</u>					
1100 Regular Programs - Elementary / Secondary					
1200 Special Programs - Elementary / Secondary					
1300 Vocational Education					
1400 Other Instructional Programs - Elementary / Secondary					
Total Instruction					
2000 <u>Support Services</u>					
2100 Support Services - Students					
2200 Support Services - Instructional Staff					
2300 Support Services - Administration					
2400 Support Services - Pupil Health					
2500 Support Services - Business		744.00			
2600 Operation and Maintenance of Plant Services					
2700 Student Transportation Services					
2900 Other Support Services					
Total Support Services		\$744.00			
3000 <u>Operation of Non-Instructional Services</u>					
3200 Student Activities					
3300 Community Services					
Total Operation of Non-Instructional Services					
4000 <u>Facilities Acquisition, Construction and Improvement Services</u>					
4600 Existing Building Improvement Services		5,494.00	2,869,076.00		
Total Facilities Acquisition, Construction and Improvement Services		\$5,494.00	\$2,869,076.00		
5000 <u>Other Expenditures and Financing Uses</u>					
5100 Debt Service / Other Expenditures and Financing Uses					
5200 Interfund Transfers - Out					
Total Other Expenditures and Financing Uses					
TOTAL ACTUAL EXPENDITURES & OTHER FINANCING USES		\$6,238.00	\$2,869,076.00		

LEA : 103028203 Riverview SD

Printed 11/30/2022 3:16:39 PM

	<u>Total</u>
1000 <u>Instruction</u>	
1100 Regular Programs - Elementary / Secondary	10,868,899.00
1200 Special Programs - Elementary / Secondary	2,752,517.00
1300 Vocational Education	489,377.00
1400 Other Instructional Programs - Elementary / Secondary	127,640.00
Total Instruction	\$14,238,433.00
2000 <u>Support Services</u>	
2100 Support Services - Students	548,460.00
2200 Support Services - Instructional Staff	2,246,111.00
2300 Support Services - Administration	1,836,515.00
2400 Support Services - Pupil Health	155,744.00
2500 Support Services - Business	457,982.00
2600 Operation and Maintenance of Plant Services	1,850,409.00
2700 Student Transportation Services	863,183.00
2900 Other Support Services	19,061.00
Total Support Services	\$7,977,465.00
3000 <u>Operation of Non-Instructional Services</u>	
3200 Student Activities	676,788.00
3300 Community Services	58,662.00
Total Operation of Non-Instructional Services	\$735,450.00
4000 <u>Facilities Acquisition, Construction and Improvement Services</u>	
4600 Existing Building Improvement Services	2,884,570.00
Total Facilities Acquisition, Construction and Improvement Services	\$2,884,570.00
5000 <u>Other Expenditures and Financing Uses</u>	
5100 Debt Service / Other Expenditures and Financing Uses	1,735,525.00
5200 Interfund Transfers - Out	1,400,000.00
Total Other Expenditures and Financing Uses	\$3,135,525.00
TOTAL ACTUAL EXPENDITURES & OTHER FINANCING USES	\$28,971,443.00

LEA : 103028203 Riverview SD

Printed 11/30/2022 3:17:08 PM

PSERS Salary Data (Salary Data should relate to the General Fund only)

Amount	Description	Amount
	Total Salary Base for salaries subject to PSERS withholding	10,121,684.00
	Total Federally Funded salaries subject to PSERS withholding	284,620.00

Title I Expenditure Data

Amount	Description	Amount
	Expenditures Funded with Current Title I Funds	186,061.00
	Expenditures Funded with Carry over Title I Funds	
Total Title I Expenditure Data		\$186,061.00

Title IV Revenue Data

Amount	Description	Amount
	Revenue from Title IV-A-1: Student Support and Academic Enrichment Grants	14,139.00
	Revenue from Title IV-B: 21st Century Community Learning Centers	

Title V Revenue Data

Amount	Description	Amount
	Revenue from Title V-B-2: Rural and Low-Income School Programs	
	Revenue from Title V-B-1: Small Rural School Achievement (Directly from the Federal Govt)	

LEA : 103028203 Riverview SD

1 . <u>Current Special Education Expenditures within Function 1000.\r\nSee list of exclusions in the note below.</u>	2,548,251.00
2 . <u>Current Special Education Expenditures within Function 2000.\r\nSee list of exclusions in the note below.</u>	535,179.00
3 . <u>Current Special Education Expenditures within Sub-Function 2100.\r\nThis data should also be included in line 2 above.\r\nSee list of exclusions in the note below.</u>	61,561.00
4 . <u>Current Special Education Expenditures within Sub-Function 2200.\r\nThis data should also be included in line 2 above.\r\nSee list of exclusions in the note below.</u>	181,836.00
5 . <u>Current Special Education Expenditures within Sub-Function 2700.\r\nThis data should also be included in line 2 above.\r\nSee list of exclusions in the note below.</u>	215,796.00
6 . <u>Current Special Education Expenditures within Sub-Function 3100.\r\nSee list of exclusions in the note below.</u>	
7 . <u>Current Special Education Expenditures within Sub-Function 3200.\r\nSee list of exclusions in the note below.</u>	37,920.00

Note: The Current Special Education Expenditure amounts for each line should be calculated as follows:

- * Include the total expenditures for special education costs from all funds for the function/sub-function requested
- * Exclude data from sub-functions: 1243,1450,1500,1600,1807,2280,2450,2750,2990
- * Exclude data from objects: 322,511,512,516,561,562,564,566,592,593,594,595,596,597,700,830,899

Benefits for Staff Relative to Collective Bargaining Agreements

	OBJECT	COVERED	NOT COVERED	TOTAL
10 General Fund	No Self Insurance data to report			
	211 Medical Insurance	1,735,910.00	192,879.00	1,928,789.00
	212 Dental Insurance	120,199.00	13,355.00	133,554.00
	215 Eye Care Insurance	18,743.00	2,083.00	20,826.00
	216 Prescription Insurance			
	271 Self-Insurance Medical Benefits			
	272 Self-Insurance Dental Benefits			
	275 Self-Insurance Eye Care Benefits			
	276 Self-Insurance Prescription Benefits			
	FUND TOTAL	\$1,874,852.00	\$208,317.00	\$2,083,169.00
50 Enterprise Fund	No Self Insurance data to report			
	211 Medical Insurance			
	212 Dental Insurance			
	215 Eye Care Insurance			
	216 Prescription Insurance			
	271 Self-Insurance Medical Benefits			
	272 Self-Insurance Dental Benefits			
	275 Self-Insurance Eye Care Benefits			
	276 Self-Insurance Prescription Benefits			
	FUND TOTAL			
60 Internal Service Fund	No Self Insurance data to report			
	211 Medical Insurance			
	212 Dental Insurance			
	215 Eye Care Insurance			
	216 Prescription Insurance			
	271 Self-Insurance Medical Benefits			
	272 Self-Insurance Dental Benefits			
	275 Self-Insurance Eye Care Benefits			
	276 Self-Insurance Prescription Benefits			
	FUND TOTAL			
Total of All Funds		\$1,874,852.00	\$208,317.00	\$2,083,169.00

LEA : 103028203 Riverview SD

Printed 11/30/2022 3:17:16 PM

Function	Special Education (Prior Year)	Nonspecial Education (Prior Year)	Total (Prior Year)	Special Education (Current Year)	Nonspecial Education (Current Year)	Total (Current Year)
2120 Guidance Services	54,665.73	491,891.58	546,557.31	53,130.00	478,166.00	531,296.00
2140 Psychological Services				7,494.00	1,874.00	9,368.00
2150 Speech Pathology and Audiology Services						
2160 Social Work Services				1,559.00	6,237.00	7,796.00
2260 Instruction and Curriculum Development Services	18,260.47	164,344.24	182,604.71	11,525.00	103,728.00	115,253.00
2350 Legal and Accounting Services	14,952.80	59,811.20	74,764.00	14,688.00	58,754.00	73,442.00
2420 Medical Services	695.00	6,255.00	6,950.00	1,390.00	12,510.00	13,900.00
2440 Nursing Services	13,413.52	120,721.63	134,135.15	14,184.00	127,660.00	141,844.00
2700 Student Transportation Services	179,260.22	537,771.91	717,032.13	215,796.00	647,387.00	863,183.00
Total	\$281,247.74	\$1,380,795.56	\$1,662,043.30	\$319,766.00	\$1,436,316.00	\$1,756,082.00

LEA : 103028203 Riverview SD

Printed 11/30/2022 3:17:19 PM

(PRINCIPAL AMOUNTS ONLY)

GOVERNMENTAL FUNDS/ ACTIVITIES

	Short-Term Borrowing	General Obligation Bonds/Notes	Authority Building Obligations	OLTD, Ext Term Fin, Leases	Other Post- Employment Benefits (OPEB)	Compensated Absences	Net Pension Liability	Total
1. Debt at Beginning of Fiscal Year		23,545,000.00		242,737.00	4,582,152.00	37,380.00	32,301,000.00	60,708,269.00
2. Additional Debt Incurred During Year					284,161.00	10,520.00		294,681.00
3. Retirements and Repayments		880,000.00		58,183.00		3,720.00	4,711,000.00	5,652,903.00
4. Debt at End of Fiscal Year		22,665,000.00		184,554.00	4,866,313.00	44,180.00	27,590,000.00	55,350,047.00
5. Accreted Interest at End Of Fiscal Year								
6. Total Debt and Accreted Interest		22,665,000.00		184,554.00	4,866,313.00	44,180.00	27,590,000.00	55,350,047.00
7. Current Portion P&I - Due within 1 year		1,545,169.00		62,179.00		2,000.00		1,609,348.00
8. Interest Paid during current fiscal year		661,366.00		3,996.00				665,362.00

(PRINCIPAL AMOUNTS ONLY)

PROPRIETARY FUNDS

- 1. Debt at Beginning of Fiscal Year
- 2. Additional Debt Incurred During Year
- 3. Retirements and Repayments
- 4. Debt at End of Fiscal Year
- 5. Accreted Interest at End Of Fiscal Year
- 6. Total Debt and Accreted Interest
- 7. Current Portion P&I - Due within 1 year
- 8. Interest Paid during current fiscal year

LEA : 103028203 Riverview SD

Total Principal and Interest Payments Made by Your School - All Funds

Function	Fund		Principal (910)	Principal (920)	Interest (830)	Total (Principal +Interest)	Misc Other Uses (990)
5110	10	General Fund	900,000.00		664,366.00	1,564,366.00	
5110	20	Special Revenue Funds					
5110	30	Capital Projects Funds					
5110	40	Debt Service Fund					
5110	90	Permanent Fund					
5120	10	General Fund					
5120	20	Special Revenue Funds					
5120	30	Capital Projects Funds					
5120	40	Debt Service Fund					
5140	10	General Fund	38,183.00		3,996.00	42,179.00	
5140	20	Special Revenue Funds					
5140	30	Capital Projects Funds					
5140	40	Debt Service Fund					
5140	90	Permanent Fund					
Total Debt Payments - Governmental Funds			\$938,183.00		\$668,362.00	\$1,606,545.00	

Function	Fund		Principal (910)	Principal (920)	Interest (830)	Total (Principal +Interest)
5110	50	Enterprise Fund				
5110	60	Internal Service Fund				
5120	50	Enterprise Fund				
5120	60	Internal Service Fund				
5140	50	Enterprise Fund				
5140	60	Internal Service Fund				
Total Debt Payments - Proprietary Funds						

LEA : 103028203 Riverview SD

Debt Category	Debt Issue Date (MM/YYYY)	Principal Amounts Only				Current Portion Due Within One Year (Principal and Interest)	Interest Paid During Fiscal Year
		Debt at Beginning of Fiscal Year	Additions	Reductions / Repayments	Debt at End of Fiscal Year		
General Obligation Bonds/Notes – CIB	10/2021	7,215,000.00		5,000.00	7,210,000.00	184,738.00	179,788.00
General Obligation Bonds/Notes – CIB	06/2020	5,480,000.00		860,000.00	4,620,000.00	1,016,050.00	151,850.00
General Obligation Bonds/Notes – CIB	06/2020	3,090,000.00		5,000.00	3,085,000.00	66,475.00	61,525.00
General Obligation Bonds/Notes – CIB	06/2018	7,190,000.00		5,000.00	7,185,000.00	250,306.00	245,430.00
General Obligation Bonds/Notes – CIB	09/2010	570,000.00		5,000.00	565,000.00	27,600.00	22,773.00
Extended Term Financing Agreements		80,000.00		20,000.00	60,000.00	20,000.00	
Compensated Absences		37,380.00	10,520.00	3,720.00	44,180.00	2,000.00	
Other Post-Employment Benefits (OPEB)		4,582,152.00	284,161.00		4,866,313.00		
Net Pension Liability		32,301,000.00		4,711,000.00	27,590,000.00		
Leases		162,737.00		38,183.00	124,554.00	42,179.00	3,996.00
Totals for Debt Entered:		\$60,708,269.00	\$294,681.00	\$5,652,903.00	\$55,350,047.00	\$1,609,348.00	\$665,362.00

LEA : 103028203 Riverview SD

Printed 11/30/2022 3:17:23 PM

General Fund (10)

Section 1: Tuition/Purchased Services as Reported within Expenditure Detail	Amount
Tuition Reported in General Fund Expenditures 1000-560	1,243,731.00
Purchased Services in General Fund Expenditures 1000-594 and 1000-597	
Section 1 Total	\$1,243,731.00

Section 2: Tuition Paid to Institution Types During Fiscal Year	Tuition Paid For Nonspecial Education	Tuition Paid For Special Education	Total
1 1306 Institutions			
2 Institutionalized Children's Programs			
3 Juveniles Incarcerated in Adult Facilities			
4 Residential Treatment Facilities			
5 Other Local Education Agencies		21,960.49	21,960.49
6 Brick and Mortar Charter Schools	280,994.94		280,994.94
7 Cyber Charter Schools	292,579.06		292,579.06
8 Career and Technology Centers	127,583.93	16,856.16	144,440.09
9 Approved Private Schools		387,580.33	387,580.33
10 PA Chartered Schools for the Deaf and Blind			
11 Private Residential Rehabilitative Institutions		100,676.09	100,676.09
12 Juvenile Detention Centers			
13 Special Program Jointures			
14 Other Tuition Not Included Elsewhere In This Section		15,500.00	15,500.00
Section 2 Total	\$701,157.93	\$542,573.07	\$1,243,731.00

LEA : 103028203 Riverview SD

Printed 11/30/2022 3:17:26 PM

Food Service / Cafeteria Operations Fund (51)

		<u>Total</u>
3000 Operation of Non-Instructional Services		
500 <u>Other Purchased Services</u>		
570 Food Service Management		527,890.00
Total Other Purchased Services		\$527,890.00
600 <u>Supplies</u>		
610 General Supplies		52,981.00
Total Supplies		\$52,981.00
700 <u>Property</u>		
740 Depreciation		8,450.00
Total Property		\$8,450.00
800 <u>Other Objects</u>		
810 Dues and Fees		2,603.00
Total Other Objects		\$2,603.00
Total 3000 Operation of Non-Instructional Services		\$591,924.00

LEA : 103028203 Riverview SD

Printed 11/30/2022 3:17:26 PM

Food Service / Cafeteria Operations Fund (51)

3100 Food Services	<u>Elementary</u>	<u>Secondary</u>	<u>Federal</u>	<u>Total</u>
500 <u>Other Purchased Services</u>				
570 Food Service Management				527,890.00
Total Other Purchased Services				\$527,890.00
600 <u>Supplies</u>				
610 General Supplies				52,981.00
Total Supplies				\$52,981.00
700 <u>Property</u>				
740 Depreciation				8,450.00
Total Property				\$8,450.00
800 <u>Other Objects</u>				
810 Dues and Fees				2,603.00
Total Other Objects				\$2,603.00
Total 3100 Food Services				\$591,924.00

	<u>Food Service(51)</u>	<u>Child Care Operations(52)</u>	<u>Other Enterprise(58)</u>	<u>Internal Service(60)</u>	<u>Total</u>
3000 <u>Operation of Non-Instructional Services</u>					
3100 Food Services	591,924.00				591,924.00
Total Operation of Non-Instructional Services	\$591,924.00				\$591,924.00
TOTAL ACTUAL EXPENDITURES & OTHER FINANCING USES	\$591,924.00				\$591,924.00

LEA : 103028203 Riverview SD

Printed 11/30/2022 3:17:35 PM

Fund	School	School Number	Local Personnel	Local Nonpersonnel	State Personnel	State Nonpersonnel	Federal Personnel	Federal Nonpersonnel	Total	Explanation
10										
	Riverview JSHS	6928	7,661,695.00	1,102,177.00	3,037,189.00	436,916.00	357,111.00	317,201.00	12,912,289.00	
	Tenth Street El Sch	295	2,706,370.00	389,326.00	1,072,838.00	154,334.00	126,144.00	112,046.00	4,561,058.00	
	Verner El Sch	6109	1,473,892.00	212,027.00	584,268.00	84,050.00	68,698.00	61,020.00	2,483,955.00	
Total			11,841,957.00	1,703,530.00	4,694,295.00	675,300.00	551,953.00	490,267.00	19,957,302.00	